



TULEX

Keeping the World BOLTED together...

Where Quality counts and Workmanship Lives...

Tulex Industrial Tools is a professionally managed, technically efficient organisation. We believe in providing quality to our clients with timely deliveries at the most competitive prices. Quality control and perfection are the key words for us. Our tools have found ready acceptance with all industrial sectors such as **Automobiles, Railways, Steel, Mining, Thermal Power Plants, Turbine Manufacturers, Atomic Power Plants, Petrochemicals, Oil and Gas Industry, Cement plants, Construction & Engineering Industry, etc.** Tulex tools are designed to withstand high torque and are suitable for use with all types of driving tools including electric or hydraulic power tools.

TULEX

TULEX INDUSTRIAL TOOLS (P) LTD

An ISO 9001-2000 Company

www.tulextools.com

• TULEX MANUAL BI-HEX (12 POINT) SOCKETS :

These sockets are designed to be used manually, for example, with torque wrenches. They have double hex broaching and a black industrial rust resistant finish. The standard range covers bolt/nut across flat sizes 5.5 mm to 60 mm, 1/4 inches to 2.7/16 inches and equivalent British sizes in 1/4" (6.35 mm), 3/8" (9.5 mm), 1/2" (12.7 mm), 3/4" (19 mm) and 1" (25.4 mm) square drives. They are designed for extra torque to meet heavy duty industrial needs and are available in standard and deep lengths. Deep sockets can be used to accommodate long studs. The socket can be provided with a positive locking design for its attachment with the driving tools having spring loaded ball and button. This is a safety feature for the operator working in difficult areas.



Note: 1. BiHex Impact Sockets can also be supplied against special orders.
2. Thin walled Impact Sockets (Hex/BiHex) can also be supplied against special orders

SHORT

PART NO.	ACROSS FLATS	DIA AT SOCKET END	DIA AT DRIVE END	OVERALL LENGTH	PART NO.	OVERALL LENGTH
TUM-5.5A	5.5	9.0	12.0	22	TUM-5.5AD	45
TUM-6A	6.0	10.0	12.0	22	TUM-6AD	45
TUM-7A	7.0	11.0	12.0	22	TUM-7AD	45
TUM-8A	8.0	12.5	12.0	22	TUM-8AD	45
TUM-9A	9.0	13.5	12.0	22	TUM-9AD	45
TUM-10A	10.0	15.0	12.0	22	TUM-10AD	45
TUM-11A	11.0	16.0	12.0	22	TUM-11AD	45
TUM-12A	12.0	17.5	12.0	22	TUM-12AD	45
TUM-13A	13.0	19.0	12.0	22	TUM-13AD	45
TUM-14A	14.0	20.5	12.0	22	TUM-14AD	45

1/4" 6.35 mm
Metric mm sizes

SHORT

PART NO.	ACROSS FLATS	DIA AT SOCKET END	DIA AT DRIVE END	OVERALL LENGTH	PART NO.	OVERALL LENGTH
TU-14A	1/4"	10.0	12.0	22	TU-14AD	45
TU-15A	9/32"	11.0	12.0	22	TU-15AD	45
TU-16A	5/16"	12.0	12.0	22	TU-16AD	45
TU-17A	11/32"	14.0	12.0	22	TU-17AD	45
TU-18A	3/8"	15.0	12.0	22	TU-18AD	45
TU-19A	7/16"	16.5	12.0	22	TU-19AD	45
TU-20A	1/2"	19.0	12.0	22	TU-20AD	45
TU-21A	9/16"	20.5	12.0	22	TU-21AD	45

1/4" 6.35 mm
American inch sizes

SHORT

PART NO.	ACROSS FLATS	DIA AT SOCKET END	DIA AT DRIVE END	OVERALL LENGTH	PART NO.	OVERALL LENGTH
TUM-6B	6	10.0	20.0	30	TUM-6BD	54
TUM-7B	7	11.5	20.0	30	TUM-7BD	54
TUM-8B	8	12.5	20.0	30	TUM-8BD	54
TUM-9B	9	14.0	20.0	30	TUM-9BD	54
TUM-10B	10	15.0	20.0	30	TUM-10BD	54
TUM-11B	11	16.5	20.0	30	TUM-11BD	54
TUM-12B	12	17.5	20.0	30	TUM-12BD	54
TUM-13B	13	19.0	20.0	30	TUM-13BD	54
TUM-14B	14	20.5	20.5	30	TUM-14BD	54
TUM-15B	15	21.0	21.0	30	TUM-15BD	54
TUM-16B	16	22.5	21.0	30	TUM-16BD	54
TUM-17B	17	24.0	21.0	30	TUM-17BD	54
TUM-18B	18	25.5	21.0	30	TUM-18BD	54
TUM-19B	19	26.5	21.0	30	TUM-19BD	54
TUM-20B	20	27.5	21.0	30	TUM-20BD	54
TUM-21B	21	29.0	25.0	30	TUM-21BD	54
TUM-22B	22	30.5	25.0	30	TUM-22BD	54

3/8" 9.5 mm
Metric mm sizes

SHORT

PART NO.	ACROSS FLATS	DIA AT SOCKET END	DIA AT DRIVE END	OVERALL LENGTH	PART NO.	OVERALL LENGTH
TU-14B	1/4"	10.0	20.0	30	TU-14BD	54
TU-16B	5/16"	12.5	20.0	30	TU-16BD	54
TU-18B	3/8"	15.0	20.0	30	TU-18BD	54
TU-19B	7/16"	16.5	20.0	30	TU-19BD	54
TU-20B	1/2"	19.0	20.0	30	TU-20BD	54
TU-21B	9/16"	20.5	20.5	30	TU-21BD	54
TU-23B	5/8"	22.5	21.0	30	TU-23BD	54
TU-24B	11/16"	25.5	21.0	30	TU-24BD	66
TU-25B	3/4"	26.5	21.0	30	TU-25BD	66
TU-27B	13/16"	28.5	21.0	30	TU-27BD	66
TU-28B	7/8"	30.0	25.0	35	TU-28BD	66
TU-30B	1"	31.5	25.0	35	TU-30BD	70

3/8" 9.5 mm
American inch sizes

SHORT

PART NO.	ACROSS FLATS	DIA AT SOCKET END	DIA AT DRIVE END	OVERALL LENGTH	PART NO.	OVERALL LENGTH
TUM-8C	8	14.0	23.0	38	TUM-8CD	60
TUM-9C	9	15.5	23.0	38	TUM-9CD	60
TUM-10C	10	16.0	23.0	38	TUM-10CD	80
TUM-11C	11	18.0	23.0	38	TUM-11CD	80
TUM-12C	12	19.0	23.0	38	TUM-12CD	80
TUM-13C	13	20.0	23.0	38	TUM-13CD	80
TUM-14C	14	21.5	23.0	38	TUM-14CD	80
TUM-15C	15	23.0	23.0	38	TUM-15CD	80
TUM-16C	16	24.0	24.0	38	TUM-16CD	80
TUM-17C	17	25.5	25.5	38	TUM-17CD	80
TUM-18C	18	26.5	26.0	38	TUM-18CD	80
TUM-19C	19	27.5	26.0	38	TUM-19CD	80
TUM-20C	20	29.0	26.0	38	TUM-20CD	80
TUM-21C	21	30.5	26.0	38	TUM-21CD	80
TUM-22C	22	31.5	26.0	38	TUM-22CD	80
TUM-23C	23	33.0	26.0	38	TUM-23CD	80
TUM-24C	24	34.0	28.0	38	TUM-24CD	80
TUM-25C	25	35.5	28.0	38	TUM-25CD	80
TUM-26C	26	37.0	28.0	38	TUM-26CD	80
TUM-27C	27	38.0	28.0	38	TUM-27CD	80
TUM-28C	28	39.0	28.0	42	TUM-28CD	80
TUM-29C	29	40.5	28.0	42	TUM-29CD	80
TUM-30C	30	41.5	30.0	45	TUM-30CD	80
TUM-31C	31	43.0	30.0	45	TUM-31CD	80
TUM-32C	32	44.0	30.0	45	TUM-32CD	80
TUM-33C	33	44.5	30.0	48	TUM-33CD	80
TUM-34C	34	47.0	30.0	48	TUM-34CD	80

1/2" 12.7 mm
Metric mm sizes

SHORT

PART NO.	ACROSS FLATS	DIA AT SOCKET END	DIA AT DRIVE END	OVERALL LENGTH	PART NO.	OVERALL LENGTH
TU-18C	3/8"	16.0	23.0	38	TU-18CD	80
TU-19C	7/16"	18.0	23.0	38	TU-19CD	80
TU-20C	1/2"	20.0	23.0	38	TU-20CD	80
TU-21C	9/16"	22.0	23.0	38	TU-21CD	80
TU-23C	5/8"	23.5	23.5	38	TU-23CD	80
TU-24C	11/16"	25.0	25.0	38	TU-24CD	80
TU-25C	3/4"	27.5	26.0	38	TU-25CD	80
TU-27C	13/16"	30.0	26.0	38	TU-27CD	80
TU-28C	7/8"	31.5	26.0	38	TU-28CD	80
TU-29C	15/16"	34.0	28.0	38	TU-29CD	80
TU-30C	1"	35.5	28.0	38	TU-30CD	80
TU-31C	1.1/16"	38.0	28.0	38	TU-31CD	80
TU-32C	1.1/8"	39.5	28.0	42	TU-32CD	80
TU-33C	1.3/16"	42.0	30.0	45	TU-33CD	80
TU-34C	1.1/4"	44.0	30.0	45	TU-34CD	80
TU-35C	1.5/16"	48.0	30.0	48	TU-35CD	80
TU-36C	1.3/8"	49.5	30.0	48	TU-36CD	80
TU-37C	1.7/16"	51.5	32.0	48	TU-37CD	80
TU-38C	1.1/2"	53.5	32.0	50	TU-38CD	80

1/2" 12.7 mm
American inch sizes

SHORT

PART NO.	ACROSS FLATS	DIA AT SOCKET END	DIA AT DRIVE END	OVERALL LENGTH	PART NO.	OVERALL LENGTH
TUM-19D	19	31.0	41.0	44	TUM-19DD	75
TUM-22D	22	35.0	41.0	48	TUM-22DD	75
TUM-24D	24	37.5	43.0	48	TUM-24DD	75
TUM-27D	27	41.5	43.0	50	TUM-27DD	75
TUM-30D	30	46.5	45.0	50	TUM-30DD	80
TUM-32D	32	48.0	45.0	52	TUM-32DD	85
TUM-36D	36	53.0	45.0	54	TUM-36DD	90
TUM-38D	38	54.5	48.0	57	TUM-38DD	90
TUM-41D	41	59.0	48.0	57	TUM-41DD	95
TUM-46D	46	64.5	48.0	60	TUM-46DD	95
TUM-50D	50	69.0	48.0	63	TUM-50DD	95
TUM-55D	55	77.0	48.0	69	TUM-55DD	110
TUM-60D	60	83.0	48.0	76	TUM-60DD	110

3/4" 19 mm
Metric mm sizes

SHORT

PART NO.	ACROSS FLATS	DIA AT SOCKET END	DIA AT DRIVE END	OVERALL LENGTH	PART NO.	OVERALL LENGTH
TU-21D	9/16"	25.0	38.0	44	TU-21DD	75
TU-23D	5/8"	27.0	38.0	44	TU-23DD	75
TU-24D	11/16"	29.0	38.0	44	TU-24DD	75
TU-25D	3/4"	32.0	41.0	44	TU-25DD	75
TU-27D	13/16"	34.0	41.0	48	TU-27DD	75
TU-28D	7/8"	35.5	41.0	48	TU-28DD	75
TU-29D	15/16"	37.0	43.0	48	TU-29DD	75
TU-30D	1"	39.5	43.0	48	TU-30DD	75
TU-31D	1.1/16"	42.0	43.0	50	TU-31DD	75
TU-32D	1.1/8"	44.0	43.0	50	TU-32DD	75
TU-33D	1.3/16"	44.5	43.0	52	TU-33DD	85
TU-34D	1.1/4"	47.5	45.0	52	TU-34DD	85
TU-35D	1.3/16"	49.5	45.0	52	TU-35DD	85
TU-36D	1.3/8"	51.5	45.0	54	TU-36DD	85
TU-37D	1.7/16"	54.0	48.0	54	TU-37DD	90
TU-38D	1.1/2"	54.5	48.0	57	TU-38DD	90
TU-39D	1.5/8"	59.0	48.0	57	TU-39DD	95
TU-40D	1.11/16"	59.5	50.0	65	TU-40DD	95
TU-41D	1.3/4"	63.0	50.0	65	TU-41DD	95
TU-42D	1.13/16"	64.0	50.0	68	TU-42DD	95
TU-43D	1.7/8"	67.0	60.0	68	TU-43DD	95
TU-45D	2"	69.5	60.0	70	TU-45DD	100

3/4" 19 mm
American inch sizes

SHORT

DEEP

PART NO.	ACROSS FLATS	DIA AT SOCKET END	DIA AT DRIVE END	OVERALL LENGTH	PART NO.	OVERALL LENGTH
TUM-27E	27	45.0	54.0	56	TUM-27ED	80
TUM-30E	30	49.0	54.0	56	TUM-30ED	85
TUM-32E	32	51.0	54.0	58	TUM-32ED	85
TUM-33E	33	52.0	54.0	58	TUM-33ED	85
TUM-34E	34	53.0	54.0	58	TUM-34ED	90
TUM-36E	36	55.5	54.0	60	TUM-36ED	90
TUM-38E	38	58.0	54.0	62	TUM-38ED	90
TUM-41E	41	63.0	58.0	62	TUM-41ED	90
TUM-46E	46	69.0	58.0	67	TUM-46ED	100
TUM-50E	50	74.0	58.0	68	TUM-50ED	100
TUM-55E	55	79.5	58.0	73	TUM-55ED	110
TUM-60E	60	87.0	58.0	80	TUM-60ED	120

SHORT

DEEP

PART NO.	ACROSS FLATS	DIA AT SOCKET END	DIA AT DRIVE END	OVERALL LENGTH	PART NO.	OVERALL LENGTH
TU-31E	1.1/16"	44.5	54.0	56	TU-31ED	80
TU-32E	1.1/8"	47.0	54.0	56	TU-32ED	80
TU-34E	1.1/4"	51.0	54.0	58	TU-34ED	85
TU-35E	1.5/16"	53.0	54.0	58	TU-35ED	85
TU-36E	1.3/8"	54.5	54.0	58	TU-36ED	90
TU-37E	1.7/16"	57.0	54.0	60	TU-37ED	90
TU-38E	1.1/2"	58.0	54.0	62	TU-38ED	90
TU-39E	1.5/8"	64.0	58.0	62	TU-39ED	90
TU-40E	1.11/16"	64.5	58.0	65	TU-40ED	95
TU-41E	1.3/4"	67.0	58.0	65	TU-41ED	95
TU-42E	1.13/16"	69.0	58.0	67	TU-42ED	100
TU-43E	1.7/8"	71.0	58.0	68	TU-43ED	100
TU-44E	1.15/16"	73.0	58.0	68	TU-44ED	100
TU-45E	2"	74.5	58.0	70	TU-45ED	100
TU-46E	2.1/16"	77.0	58.0	72	TU-46ED	110
TU-47E	2.3/16"	82.0	58.0	73	TU-47ED	120
TU-48E	2.1/4"	84.0	58.0	77	TU-48ED	120
TU-50E	2.3/8"	88.0	58.0	80	TU-50ED	120
TU-51E	2.7/16"	89.5	58.0	80	TU-51ED	120

1" 25.4 mm
Metric mm sizes

1" 25.4 mm
American inch sizes

• TULEX SQUARE DRIVE ADAPTORS :



Square Drive Adaptors are used as a convertor to permit use of sockets and driving tools of different square drive sizes. It is available in 1/4" (6.35mm), 3/8" (9.5mm), 1/2" (12.7mm), 3/4" (19mm), 1" (25.4mm), 1.1/2" (38.1mm) square drives. The torque capacity of these adaptors is limited to the torque capacity of smaller square drive.

PART NO.	SQUARE DRIVE		DIA AT DRIVE END	OVERALL LENGTH
	FEMALE	MALE		
TUA-AB	1/4"	3/8"	14.0	27
TUA-BA	3/8"	1/4"	20.0	32
TUA-BC	3/8"	1/2"	20.0	35
TUA-CB	1/2"	3/8"	26.0	38
TUA-DC	3/4"	1/2"	38.5	55
TUA-CD	1/2"	3/4"	26.0	44
TUA-DE	3/4"	1"	48.0	65
TUA-ED	1"	3/4"	54.0	70
TUA-EF	1"	1.1/2"	58.0	90
TUA-FE	1.1/2"	1"	86.0	110

• TULEX SLIDING T-BARS :



Sliding T-Bar is a tool, which is used for driving of manually operated sockets. It has a large leverage handle, which allows application of force comfortably. Further, final tightening can be done with both the hands. The Sliding T-Head is provided with a ball to arrest the movement of bar at any desired position. Sliding T-Bar is available in 1/4" (6.35mm), 3/8" (9.5mm), 1/2" (12.7mm), 3/4" (19mm), 1" (25.4mm) and 1.1/2"(38.1mm) square drives.

PART NO.	SQUARE DRIVE	OVERALL LENGTH
TUTB-115A	1/4"	115
TUTB-250B	3/8"	250
TUTB-300C	1/2"	300
TUTB-500D	3/4"	500
TUTB-750E	1"	750
TUTB-920F	1.1/2"	920

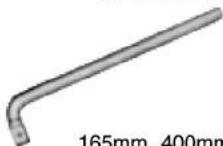
• TULEX REVERSIBLE RATCHET HANDLES:



Reversible Ratchet Handle is a tool, which has a feature of reversing the direction of operation inside with out detaching the socket. It has a mechanism for both right and left hand operations. It is available in 1/4" (6.35mm), 3/8" (9.5mm), 1/2" (12.7mm), 3/4" (19mm) and 1" (25.4mm) square drives.

PART NO.	SQUARE DRIVE	OVERALL LENGTH
TURH-110A	1/4"	110
TURH-190B	3/8"	190
TURH-260C	1/2"	260
TURH-605D	3/4"	605
TURH-885E	1"	885

• TULEX ANGLE / L-HANDLES :



Angle / L-Handle is used for driving manually operated sockets for working in restricted places. It is manufactured in 1/4" (6.35mm), 3/8" (9.5mm), 1/2" (12.7mm), 3/4" (19mm) and 1" (25.4mm) square drives with overall lengths of 125 mm, 140mm, 165mm, 400mm and 600mm respectively.

PART NO.	SQUARE DRIVE	OVERALL LENGTH
TULH-A	1/4"	125
TULH-B	3/8"	140
TULH-C	1/2"	165
TULH-D	3/4"	400
TULH-E	1"	600

• TULEX EXTENSION BARS :



An Extension Bar is a coupler that helps the operator to reach nuts and bolts located at inaccessible places, or where a driving tool cannot have access to sockets and/or where clearance for operations of driving tool is not available. One end of the Extension Bar is male which fits into the square drive of the socket and the other end is a female square drive where the driving tool fits in. The male and female drive of this tool are of the same size. It is available in 1/4" (6.35mm), 3/8" (9.5mm), 1/2" (12.7mm), 3/4" (19mm) and 1" (25.4mm) square drive with overall lengths ranging from 55mm to 400mm for the above square drives.

PART NO.	SQUARE DRIVE	OVERALL LENGTH
TUE-55A	1/4"	55
TUE-100A	1/4"	100
TUE-150A	1/4"	150
TUE-75B	3/8"	75
TUE-150B	3/8"	150
TUE-300B	3/8"	300
TUE-75C	1/2"	75
TUE-125C	1/2"	125
TUE-250C	1/2"	250
TUE-210D	3/4"	210
TUE-430D	3/4"	430
TUE-200E	1"	200
TUE-400E	1"	400

• TULEX SWIVEL HANDLES :



The Swivel handle can be used as a driving tool for manually operated sockets to tighten nuts and bolts located at awkward places, unapproachable by standard driving tools. All the driving handles are designed with adequate length to provide torque as per its size. In no case pipe etc are to be used for additional leverage. It is manufactured in 1/4" (6.35mm), 3/8" (9.5mm), 1/2" (12.7mm), 3/4" (19mm), and 1" (25.4mm) square drives.

PART NO.	SQUARE DRIVE	OVERALL LENGTH
TUSH-150A	1/4"	150
TUSH-245B	3/8"	245
TUSH-380C	1/2"	380
TUSH-580D	3/4"	580
TUSH-815E	1"	815

• TULEX UNIVERSAL JOINTS :

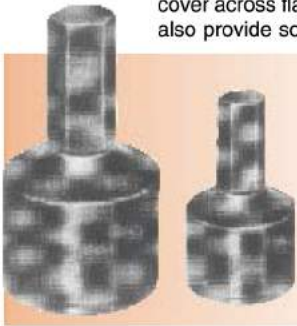


Universal Joint is a coupler interposed between BiHex socket and the driving tool. It is useful for tightening nuts located at difficult angular positions, which cannot be reached with standard tools. This is available in 1/4" (6.35mm)3/8" (9.5mm), 1/2" (12.7mm), 3/4" (19mm), and 1" (25.4mm) square drives.

PART NO.	SQUARE DRIVE	OVERALL LENGTH
TUUJ-A	1/4"Fx1/4"M	40
TUUJ-B	3/8"Fx3/8"M	50
TUUJ-C	1/2"Fx1/2"M	75
TUUJ-D	3/4"Fx3/4"M	110
TUUJ-E	1"Fx1"M	125

• TULEX HEX ADAPTORS & NUT SETTERS (HEX / ALLEN BIT SOCKETS) :

Hex Adaptors are used for tightening of socket cap screws and bolts. These are available in standard length and extra length. These are formed from solid steel bars. Available in 1/4" (6.35 mm), 3/8" (9.5 mm), 1/2" (12.7mm), 3/4" (19mm), and 1" (25.4mm), square drives to cover across flat sizes ranging from 3 mm to 36 mm and 1/8" to 1.1/8" sizes. Range of sizes are available in various square drives. We can also provide sockets for any non standard square drive size / nut size.



PART NO.	ACROSS FLATS	HEX LENGTH	OVERALL LENGTH
TUHAM-3A	3	16	40
TUHAM-4A	4	16	40
TUHAM-5A	5	16	40
TUHAM-6A	6	16	40

1/4" 6.35 mm
Metric mm sizes

PART NO.	ACROSS FLATS	HEX LENGTH	OVERALL LENGTH
TUHA-10A	1/8	16	40
TUHA-11A	5/32	16	40
TUHA-12A	3/16	16	40
TUHA-13A	7/32	16	40
TUHA-14A	1/4	16	40

1/4" 6.35 mm
American inch sizes

PART NO.	ACROSS FLATS	HEX LENGTH	OVERALL LENGTH
TUHAM-3B	3	20	44
TUHAM-4B	4	20	44
TUHAM-5B	5	20	44
TUHAM-6B	6	20	44
TUHAM-8B	8	20	44
TUHAM-10B	10	25	50

3/8" 9.5 mm
Metric mm sizes

PART NO.	ACROSS FLATS	HEX LENGTH	OVERALL LENGTH
TUHA-10B	1/8	20	44
TUHA-11B	5/32	20	44
TUHA-12B	3/16	20	44
TUHA-13B	7/32	20	44
TUHA-14B	1/4	20	44
TUHA-16B	5/16	25	50
TUHA-18B	3/8	25	50

3/8" 9.5 mm
American inch sizes

PART NO.	ACROSS FLATS	HEX LENGTH	OVERALL LENGTH
TUHAM-17E	17	40	100
TUHAM-19E	19	45	100
TUHAM-22E	22	45	100
TUHAM-24E	24	50	110
TUHAM-27E	27	50	110
TUHAM-30E	30	50	110
TUHAM-32E	32	50	110
TUHAM-36E	36	50	110

1" 25.4 mm
Metric mm sizes

PART NO.	ACROSS FLATS	HEX LENGTH	OVERALL LENGTH
TUHAM-5C	5	25	55
TUHAM-6C	6	25	55
TUHAM-8C	8	25	55
TUHAM-10C	10	25	55
TUHAM-12C	12	30	63
TUHAM-14C	14	30	63
TUHAM-17C	17	30	63

1/2" 12.7 mm
Metric mm sizes

PART NO.	ACROSS FLATS	HEX LENGTH	OVERALL LENGTH
TUHA-14C	1/4	25	55
TUHA-16C	5/16	25	55
TUHA-18C	3/8	25	55
TUHA-20C	1/2	30	63
TUHA-21C	9/16	30	63
TUHA-23C	5/8	30	63

1/2" 12.7 mm
American inch sizes

PART NO.	ACROSS FLATS	HEX LENGTH	OVERALL LENGTH
TUHA-18E	3/8	26	80
TUHA-20E	1/2	30	80
TUHA-21E	9/16	30	80
TUHA-23E	5/8	40	90
TUHA-25E	3/4	45	100
TUHA-28E	7/8	45	100
TUHA-29E	15/16	50	110
TUHA-30E	1	50	110
TUHA-31E	11/16	50	110
TUHA-32E	1.1/8	50	110

1" 25.4 mm
American inch sizes

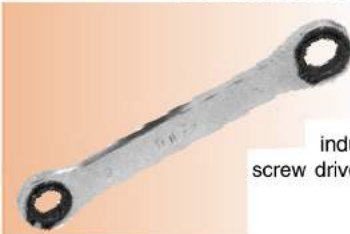
PART NO.	ACROSS FLATS	HEX LENGTH	OVERALL LENGTH
TUHAM-12D	12	30	80
TUHAM-14D	14	30	80
TUHAM-17D	17	30	80
TUHAM-19D	19	45	95
TUHAM-22D	22	45	95
TUHAM-24D	24	45	95

3/4" 19 mm
Metric mm sizes

PART NO.	ACROSS FLATS	HEX LENGTH	OVERALL LENGTH
TUHA-20D	1/2	30	80
TUHA-21D	9/16	30	80
TUHA-23D	5/8	30	80
TUHA-25D	3/4	45	95
TUHA-28D	7/8	45	95

3/4" 19 mm
American inch sizes

• TULEX RATCHETING SPANNERS (SINGLE ENDED, DOUBLE ENDED & OPEN END TYPES) :



Ratcheting spanners with double Hex broaching are ideal for faster opening and loosening of the nuts and bolts. The tool has a ratcheting mechanism, which helps the operator to complete his job comfortably without any fatigue. While operating the tools does not require detaching and resetting on the job and the operation can be carried out continuously. The tool has broaching on both the ends to cover two different sizes of nuts. The range covers across flat sizes 8 mm to 24 mm and 5/16" to 15/16". They are widely used in general engineering industry and automobile production and servicing. The tool is versatile and can also be used to tighten screws by using screw driver bit with hex drive. These are available in both single ended and double ended types.

• TULEX SLUGGING / STRIKING WRENCHES :

Tulex extra Heavy Duty Slugging / Striking Wrenches are designed for use with hammers where impact or shock loading is required for loosening of frozen and rusty nuts and bolts. These slugging wrenches are duly forged from superior grade chrome vanadium steel. The blanks are duly machined with the wrench openings broached to tolerance as per federal specifications. These slugging wrenches undergo a heat treatment process including stress relieving before undergoing shot blasting and surface finish operations.

A complete range of Heavy Duty Slugging Wrenches to suit most critical applications is available from Tulex. The Slugging Wrenches are machined out to exact wrench opening sizes within close tolerances. Hardening and tempering is done to achieve optimum hardness. Thus Tulex Slugging Wrenches are guaranteed for superior performance and durability. Tulex offers Heavy Duty Slugging Wrenches in Straight Ring, Offset Handle, Open Jaw. Structural Wrenches with tapered and Tubular Handle types are also available as specials.

Tulex Slugging Wrenches are available in a range of sizes from 27 mm to 140 mm across flat. These are suitable for most rigid applications and are useful for fertiliser plants, refineries, petrochemicals, heavy engineering industries, railways, iron and steel manufacturing plants, thermal power stations, etc.



STRAIGHT RING MODEL

METRIC		INCHES		STRAIGHT RING MODEL		
ACROSS FLAT	PART NO.	ACROSS FLAT	PART NO.	HEAD DIA	HEAD DEPTH	LENGTH
27	TUM-27S	1.1/16"	TU-31S	52	20	180
29	TUM-29S	1.1/8"	TU-32S	52	20	180
32	TUM-32S	1.1/4"	TU-34S	58	20	180
33	TUM-33S	1.5/16"	TU-35S	59	20	180
35	TUM-35S	1.3/8"	TU-36S	62	22	195
36	TUM-36S	1.7/16"	TU-37S	62	22	195
38	TUM-38S	1.1/2"	TU-38S	67	24	210
41	TUM-41S	1.5/8"	TU-39S	70	24	210
43	TUM-43S	1.11/16"	TU-40S	73	24	220
44	TUM-44S	1.3/4"	TU-41S	74	24	220
46	TUM-46S	1.13/16"	TU-42S	76	24	220
47	TUM-47S	1.7/8"	TU-43S	78	24	220
50	TUM-50S	2"	TU-45S	82	26	230
52	TUM-52S	2.1/16"	TU-46S	85	26	230
55	TUM-55S	2.3/16"	TU-47S	88	26	240
57	TUM-57S	2.1/4"	TU-48S	90	26	240
60	TUM-60S	2.3/8"	TU-50S	96	28	240
62	TUM-62S	2.7/16"	TU-51S	100	28	240
63	TUM-63S	2.1/2"	TU-52S	102	30	250
65	TUM-65S	2.9/16"	TU-53S	104	32	250
67	TUM-67S	2.5/8"	TU-54S	108	32	250
70	TUM-70S	2.3/4"	TU-56S	112	35	275
71	TUM-71S	2.13/16"	TU-57S	112	35	275
75	TUM-75S	2.15/16"	TU-59S	118	38	290
76	TUM-76S	3"	TU-60S	122	38	290
80	TUM-80S	3.1/8"	TU-61S	126	38	300
85	TUM-85S	3.3/8"	TU-63S	134	41	315
90	TUM-90S	3.5/8"	TU-64.5S	142	45	350
95	TUM-95S	3.3/4"	TU-65S	150	45	350
98	TUM-98S	3.7/8"	TU-66S	158	45	350
100	TUM-100S	4"	TU-67S	164	45	350
105	TUM-105S	4.1/8"	TU-68S	172	52	365
110	TUM-110S	4.1/4"	TU-69S	180	52	365
115	TUM-115S	4.1/2"	TU-70S	186	52	380
120	TUM-120S	4.3/4"	TU-72S	194	58	400
125	TUM-125S	4.7/8"	TU-73S	200	58	400
130	TUM-130S	5"	TU-74S	205	60	440
140	TUM-140S	5.1/2"	TU-75S	230	65	475

OFFSET HANDLE TYPE MODEL

METRIC		INCHES		OFFSET HANDLE MODEL		
ACROSS FLAT	PART NO.	ACROSS FLAT	PART NO.	HEAD DIA	HEAD DEPTH	LENGTH
30	TUM-300	1.3/16"	TU-330	54	25	210
32	TUM-320	1.1/4"	TU-340	58	25	210
33	TUM-330	1.5/1.6"	TU-350	59	25	210
35	TUM-350	1.3/8"	TU-360	62	32	240
36	TUM-360	1.7/16"	TU-370	62	32	240
38	TUM-380	1.1/2"	TU-380	67	32	240
41	TUM-410	1.5/8"	TU-390	70	32	240
43	TUM-430	1.11/16"	TU-400	73	35	275
44	TUM-440	1.3/4"	TU-410	74	35	275
46	TUM-460	1.13/16"	TU-420	76	35	275
47	TUM-470	1.7/8"	TU-430	78	35	275
50	TUM-500	2"	TU-450	82	35	275
52	TUM-520	2.1/16"	TU-460	85	38	290
55	TUM-550	2.3/16"	TU-470	88	38	290
57	TUM-570	2.1/4"	TU-480	90	38	290
60	TUM-600	2.3/8"	TU-500	96	44	310
62	TUM-620	2.7/8"	TU-510	100	44	310
63	TUM-630	2.1/2"	TU-520	102	44	310
65	TUM-650	2.9/16"	TU-530	104	44	310
67	TUM-670	2.5/8"	TU-540	108	44	310
70	TUM-700	2.3/4"	TU-560	112	50	325
71	TUM-710	2.13/16"	TU-570	112	50	325
75	TUM-750	2.15/16"	TU-590	118	50	325
76	TUM-760	3"	TU-600	122	50	325
80	TUM-800	3.1/8"	TU-610	126	50	325
85	TUM-850	3.3/8"	TU-630	134	50	325
90	TUM-900	3.5/8"	TU-640	142	57	390
95	TUM-950	3.3/4"	TU-650	150	57	390
98	TUM-980	3.7/8"	TU-660	158	57	390
100	TUM-1000	4"	TU-670	164	57	390
105	TUM-1050	4.1/8"	TU-680	172	64	450
110	TUM-1100	4.1/4"	TU-690	180	64	450
115	TUM-1150	4.1/2"	TU-700	186	64	450
120	TUM-1200	4.3/4"	TU-720	194	64	475
125	TUM-1250	4.7/8"	TU-730	200	64	475
130	TUM-1300	5"	TU-740	205	64	475

OPEN JAW MODEL

METRIC		INCHES		OPEN JAW MODEL		
ACROSS FLAT	PART NO.	ACROSS FLAT	PART NO.	HEAD DIA	HEAD DEPTH	LENGTH
32	TUM-320J	1.1/4"	TU-340J	67	20	180
33	TUM-330J	1.5/16"	TU-350J	67	20	180
35	TUM-350J	1.3/8"	TU-360J	77	20	180
36	TUM-360J	1.7/16"	TU-370J	77	20	195
38	TUM-380J	1.1/2"	TU-380J	82	22	195
41	TUM-410J	1.5/8"	TU-390J	89	22	210
43	TUM-430J	1.11/16"	TU-400J	89	22	210
44	TUM-440J	1.3/4"	TU-410J	98	22	210
46	TUM-460J	1.13/16"	TU-420J	98	22	210
47	TUM-470J	1.7/8"	TU-430J	98	22	210
50	TUM-500J	2"	TU-450J	107	24	220
52	TUM-520J	2.1/16"	TU-460J	118	24	220
55	TUM-550J	2.3/16"	TU-470J	118	25	275
57	TUM-570J	2.1/4"	TU-480J	129	25	275
60	TUM-600J	2.3/8"	TU-500J	129	25	275
62	TUM-620J	2.7/16"	TU-510J	129	25	275
63	TUM-630J	2.1/2"	TU-520J	140	25	275
65	TUM-650J	2.9/16"	TU-530J	140	28	300
67	TUM-670J	2.5/8"	TU-540J	151	28	300
70	TUM-700J	2.3/4"	TU-560J	151	30	300
71	TUM-710J	2.13/16"	TU-570J	151	30	300
75	TUM-750J	2.15/16"	TU-590J	163	32	320
76	TUM-760J	3"	TU-600J	163	32	320
80	TUM-800J	3.1/8"	TU-610J	173	35	320
85	TUM-850J	3.3/8"	TU-630J	173	35	325
90	TUM-900J	3.5/8"	TU-640J	195	40	350
95	TUM-950J	3.3/4"	TU-650J	195	40	350
98	TUM-980J	3.7/8"	TU-660J	206	40	350
100	TUM-1000J	4"	TU-670J	210	47	410
105	TUM-1050J	4.1/8"	TU-680J	220	47	410
110	TUM-1100J	4.1/4"	TU-690J	226	47	410
115	TUM-1150J	4.1/2"	TU-700J	238	56	450
120	TUM-1200J	4.3/4"	TU-720J	247	56	450
125	TUM-1250J	4.7/8"	TU-730J	255	56	450
130	TUM-1300J	5"	TU-740J	275	60	480



- TULEX INSERT SOCKETS FOR STRIKING WRENCHES :**

These sockets are designed for impact applications and are recommended for use with Straight Ring Type Slugging Wrench. This raises the slugging wrench working level for better approach. This helps to get clear working area and safeguards flooring and equipments when hammering the striking wrenches. Range covers from 32 mm to 100 mm (1 1/4" to 4" SAE) across flat sizes.



• TULEX HEAVY DUTY IMPACT HEX SOCKETS (6 POINT) :

These sockets are designed to be used with pneumatic/electric impact wrenches and nut runners. They have single hex broaching for good grip on nuts & bolts to avoid tools slipping during high speed tightening operations. Its extra wall thickness together with special steel and heat treatment process helps absorb shock transmitted to sockets while in use with impact wrenches. They have conventional locking arrangement i.e. lock button or snap ring fitted on the male square drives. They can also be provided with two cross holes and groove for locking onto the impact wrench using 'O' ring and pin arrangement. These are available in 1/4", 3/8", 1/2", 3/4", 1", 1.1/2", 2.1/2", 3.1/2" square drives to cover nut across flat sizes 6 mm to 235 mm and 1/4" to 9.1/8" in standard lengths and deep lengths. These are ideal for operating with hydraulic wrenches and most suitable for use in automobile industry. All impact sockets are made from high strength alloy steel. These are heat treated for the best combination of strength and impact resistance. All impact sockets have an optimum wall thickness for strength and access on fasteners having restrictions. All impact socket have a ring and pin arrangement for securing them to the drive. The impact sockets are plated and black oxidized coated for increased protection against rusting. It can be manufactured with chamfered openings for ease in engagement with the drive tool and the fastener against specific requests. *Note:* Locking ring & Pin are not included with the grooved impact sockets. These are available on request.



		SHORT					DEEP				
		PART NO.	ACROSS FLATS	DIA AT SOCKET END	DIA AT DRIVE END	OVERALL LENGTH	PART NO.	OVERALL LENGTH			
1/4" 6.35 mm Metric mm sizes	TUM-6AI	6	11.0	14.0	22	TUM-6ADI	45				
	TUM-7AI	7	12.0	14.0	22	TUM-7ADI	45				
	TUM-8AI	8	13.0	14.0	22	TUM-8ADI	45				
	TUM-9AI	9	14.0	14.0	22	TUM-9ADI	45				
	TUM-10AI	10	16.0	16.0	22	TUM-10ADI	45				
	TUM-11AI	11	17.0	16.0	22	TUM-11ADI	45				
	TUM-12AI	12	18.5	16.0	22	TUM-12ADI	45				
	TUM-13AI	13	19.5	16.0	22	TUM-13ADI	45				
	TUM-14AI	14	21.5	16.0	22	TUM-14ADI	45				

		SHORT					DEEP				
		PART NO.	ACROSS FLATS	DIA AT SOCKET END	DIA AT DRIVE END	OVERALL LENGTH	PART NO.	OVERALL LENGTH			
1/4" 6.35 mm American inch sizes	TU-14AI	1/4"	11.0	14.0	22	TUM-14ADI	45				
	TU-15AI	9/32"	12.0	14.0	22	TUM-15ADI	45				
	TU-16AI	5/16"	13.0	14.0	22	TUM-16ADI	45				
	TU-17AI	11/32"	14.0	14.0	22	TUM-17ADI	45				
	TU-18AI	3/8"	15.0	14.0	22	TUM-18ADI	45				
	TU-19AI	7/16"	17.0	16.0	22	TUM-19ADI	45				
	TU-20AI	1/2"	19.0	16.0	22	TUM-20ADI	45				
	TU-21AI	9/16"	21.0	16.0	22	TUM-21ADI	45				

		SHORT					DEEP				
		PART NO.	ACROSS FLATS	DIA AT SOCKET END	DIA AT DRIVE END	OVERALL LENGTH	PART NO.	OVERALL LENGTH			
3/8" 9.35 mm Metric mm sizes	TUM-7BI	7	13.0	19.0	30	TUM-7BDI	54				
	TUM-8BI	8	14.0	19.0	30	TUM-8BDI	54				
	TUM-9BI	9	15.5	19.0	30	TUM-9BDI	54				
	TUM-10BI	10	17.0	19.0	30	TUM-10BDI	54				
	TUM-11BI	11	18.0	21.0	30	TUM-11BDI	54				
	TUM-12BI	12	20.0	21.0	30	TUM-12BDI	54				
	TUM-13BI	13	21.0	21.0	30	TUM-13BDI	54				
	TUM-14BI	14	22.0	22.0	30	TUM-14BDI	54				
	TUM-15BI	15	23.5	22.0	30	TUM-15BDI	54				
	TUM-16BI	16	24.5	22.0	30	TUM-16BDI	54				
	TUM-17BI	17	25.5	22.0	30	TUM-17BDI	54				
TUM-18BI	18	27.0	22.0	30	TUM-18BDI	54					
TUM-19BI	19	27.5	22.0	30	TUM-19BDI	54					

		SHORT					DEEP				
		PART NO.	ACROSS FLATS	DIA AT SOCKET END	DIA AT DRIVE END	OVERALL LENGTH	PART NO.	OVERALL LENGTH			
3/8" 9.35 mm American inch sizes	TU-16BI	5/16"	14.0	19.0	30	TU-16BDI	54				
	TU-18BI	3/8"	15.0	19.0	30	TU-18BDI	54				
	TU-19BI	7/16"	17.5	19.0	30	TU-19BDI	54				
	TU-20BI	1/2"	20.0	20.0	30	TU-20BDI	54				
	TU-22BI	9/16"	22.0	22.0	30	TU-22BDI	54				
	TU-23BI	5/8"	24.5	22.0	30	TU-23BDI	54				
	TU-24BI	11/8"	25.5	22.0	30	TU-24BDI	54				
	TU-25BI	3/4"	27.5	22.0	30	TU-25BDI	54				

		SHORT					DEEP				
		PART NO.	ACROSS FLATS	DIA AT SOCKET END	DIA AT DRIVE END	OVERALL LENGTH	PART NO.	OVERALL LENGTH			
1/2" 12.7 mm Metric mm sizes	TUM-8CI	8	16.0	26.0	38	TUM-8CDI	60				
	TUM-9CI	9	16.5	26.0	38	TUM-9CDI	60				
	TUM-10CI	10	18.5	26.0	38	TUM-10CDI	60				
	TUM-11CI	11	20.0	26.0	38	TUM-11CDI	60				
	TUM-12CI	12	20.5	26.0	38	TUM-12CDI	60				
	TUM-13CI	13	22.5	26.0	38	TUM-13CDI	60				
	TUM-14CI	14	24.0	26.0	38	TUM-14CDI	60				
	TUM-15CI	15	25.0	26.0	38	TUM-15CDI	60				
	TUM-16CI	16	26.0	26.0	38	TUM-16CDI	60				
	TUM-17CI	17	27.5	26.0	38	TUM-17CDI	60				
	TUM-18CI	18	28.5	26.0	38	TUM-18CDI	60				
	TUM-19CI	19	29.5	28.0	38	TUM-19CDI	60				
	TUM-20CI	20	31.0	28.0	38	TUM-20CDI	60				
	TUM-21CI	21	31.5	28.0	38	TUM-21CDI	60				
	TUM-22CI	22	34.0	30.0	38	TUM-22CDI	60				
	TUM-23CI	23	35.0	30.0	38	TUM-23CDI	80				
	TUM-24CI	24	35.5	30.0	38	TUM-24CDI	80				
	TUM-25CI	25	37.0	30.0	38	TUM-25CDI	80				
	TUM-26CI	26	38.5	30.0	38	TUM-26CDI	80				
	TUM-27CI	27	39.5	30.0	38	TUM-27CDI	80				
	TUM-28CI	28	41.0	30.0	42	TUM-28CDI	80				
	TUM-29CI	29	43.0	30.0	42	TUM-29CDI	80				
	TUM-30CI	30	44.0	30.0	45	TUM-30CDI	80				
	TUM-32CI	32	47.0	30.0	45	TUM-32CDI	80				

		SHORT					DEEP				
		PART NO.	ACROSS FLATS	DIA AT SOCKET END	DIA AT DRIVE END	OVERALL LENGTH	PART NO.	OVERALL LENGTH			
1/2" 12.7 mm American inch sizes	TU-16CI	5/16"	16.0	26.0	38	TU-16CDI	60				
	TU-18CI	3/8"	16.5	26.0	38	TU-18CDI	60				
	TU-19CI	7/16"	18.0	26.0	38	TU-19CDI	60				
	TU-20CI	1/2"	20.5	26.0	38	TU-20CDI	60				
	TU-21CI	9/16"	22.5	26.0	38	TU-21CDI	60				
	TU-23CI	5/8"	25.0	26.0	38	TU-23CDI	60				
	TU-24CI	11/16"	27.5	26.0	38	TU-24CDI	60				
	TU-25CI	3/4"	29.5	28.0	38	TU-25CDI	60				
	TU-27CI	13/16"	31.5	28.0	38	TU-27CDI	60				
	TU-28CI	7/8"	34.0	30.0	38	TU-28CDI	60				
	TU-29CI	15/16"	35.1	30.0	38	TU-29CDI	60				
	TU-30CI	1"	37.5	30.0	38	TU-30CDI	60				
	TU-31CI	1.1/16"	39.5	30.0	38	TU-31CDI	60				
	TU-32CI	1.1/8"	43.0	30.0	42	TU-32CDI	60				
	TU-33CI	1.3/16"	44.5	30.0	45	TU-33CDI	60				
	TU-34CI	1.1/4"	47.0	30.0	45	TU-34CDI	60				
	TU-35CI	1.3/8"	54.0	30.0	50	TU-36CDI	60				
	TU-38CI	1.1/2"	58.0	30.0	50	TU-38CDI	60				

		SHORT					DEEP				
		PART NO.	ACROSS FLATS	DIA AT SOCKET END	DIA AT DRIVE END	OVERALL LENGTH	PART NO.	OVERALL LENGTH			
3/4" 19 mm Metric mm sizes	TUM-17DI	17	32.5	43.0	44	TUM-17DDI	75				
	TUM-18DI	18	33.5	43.0	44	TUM-18DDI	75				
	TUM-19DI	19	35.0	43.0	44	TUM-19DDI	75				
	TUM-21DI	21	37.0	43.0	48	TUM-21DDI	75				
	TUM-22DI	22	38.5	43.0	48	TUM-22DDI	75				
	TUM-24DI	24	40.0	43.0	48	TUM-24DDI	75				
	TUM-27DI	27	44.5	43.0	50	TUM-27DDI	75				
	TUM-30DI	30	49.0	45.0	50	TUM-30DDI	80				
	TUM-32DI	32	51.5	45.0	52	TUM-32DDI	85				
	TUM-33DI	33	53.0	45.0	52	TUM-33DDI	85				
	TUM-34DI	34	54.0	45.0	52	TUM-34DDI	85				
	TUM-36DI	36	55.5	45.0	54	TUM-36DDI	90				
	TUM-38DI	38	58.5	45.0	57	TUM-38DDI	90				
	TUM-41DI	41	63.0	45.0	57	TUM-41DDI	95				
	TUM-46DI	46	69.0	48.0	60	TUM-46DDI	95				
	TUM-50DI	50	74.0	48.0	63	TUM-50DDI	95				
	TUM-55DI	55	79.5	48.0	69	TUM-55DDI	110				
	TUM-60DI	60	84.5	48.0	76	TUM-60DDI	110				

		SHORT					DEEP				
		PART NO.	ACROSS FLATS	DIA AT SOCKET END	DIA AT DRIVE END	OVERALL LENGTH	PART NO.	OVERALL LENGTH			
3/4" 19 mm American inch sizes	TU-21DI	9/16"	27.5	43.0	44	TUM-21DDI	75				
	TU-23DI	5/8"	30.5	43.0	44	TUM-23DDI	75				
	TU-24DI	11/16"	31.5	43.0	44	TUM-24DDI	75				
	TU-25DI	3/4"	34.5	43.0	44	TUM-25DDI	75				
	TU-27DI	13/16"	35.5	43.0	48	TUM-27DDI	75				
	TU-28DI	7/8"	39.0	43.0	48	TUM-28DDI	75				
	TU-29DI	15/16"	41.0	43.0	48	TUM-29DDI	75				
	TU-30DI	1"	43.0	43.0	48	TUM-30DDI	75				
	TU-31DI	1.1/16"	44.5	43.0	50	TUM-31DDI	75				
	TU-32DI	1.1/8"	46.0	45.0	50	TUM-32DDI	75				
	TU-34DI	1.1/4"	51.0	45.0	52	TUM-34DDI	85				
	TU-35DI	1.5/16"	52.0	45.0	52	TUM-35DDI	85				
	TU-36DI	1.3/8"	54.5	45.0	54	TUM-36DDI	85				
	TU-37DI	1.7/16"	55.5	45.0	54	TUM-37DDI	90				
	TU-38DI	1.1/2"	58.5	48.0	57	TUM-38DDI	90				
	TU-39DI	1.5/8"	63.0	48.0	57	TUM-39DDI	95				
	TU-40DI	1.11/16"	64.5	48.0	65	TUM-40DDI	95				
	TU-42DI	1.13/16"	68.0	60.0	68	TUM-41DDI	95				
	TU-43DI	1.7/8"	69.5	60.0	68	TUM-42DDI	95				
	TU-44DI	1.15/16"	74.0	60.0	70	TUM-43DDI	95				
	TU-45DI	2"	74.5	60.0	70	TUM-44DDI	95				
	TU-46DI	2.1/16"	79.5	60.0	74	TUM-45DDI	110				
	TU-47DI	23/16"	82.0	70.0	74	TUM-46DDI	110				
	TU-48DI	2.1/4"	84.5	70.0	74	TUM-47DDI	120				
	TU-50DI	2.3/8"	89.0	70.0	78	TUM-48DDI	120				

SHORT

PART NO.	ACROSS		DIA AT		OVERALL LENGTH	DEEP	
	FLATS	SOCKET END	SOCKET END	DRIVE END		PART NO.	OVERALL LENGTH
TUM-19EI	19	37.5	54.0	54.0	54	TUM-19EDI	80
TUM-22EI	22	42.0	54.0	54.0	54	TUM-22EDI	80
TUM-24EI	24	44.5	54.0	54.0	54	TUM-24EDI	80
TUM-27EI	27	49.0	54.0	54.0	56	TUM-27EDI	80
TUM-30EI	30	53.0	54.0	54.0	56	TUM-30EDI	85
TUM-32EI	32	54.0	54.0	54.0	58	TUM-32EDI	85
TUM-33EI	33	55.5	54.0	54.0	58	TUM-33EDI	85
TUM-34EI	34	57.0	54.0	54.0	58	TUM-34EDI	90
TUM-36EI	36	59.0	54.0	54.0	60	TUM-36EDI	90
TUM-38EI	38	62.0	58.0	58.0	62	TUM-38EDI	90
TUM-41EI	41	64.5	58.0	58.0	62	TUM-41EDI	90
TUM-46EI	46	72.0	58.0	58.0	67	TUM-46EDI	100
TUM-50EI	50	77.0	58.0	58.0	68	TUM-50EDI	100
TUM-55EI	55	84.0	58.0	58.0	73	TUM-55EDI	110
TUM-60EI	60	89.0	58.0	58.0	80	TUM-60EDI	120
TUM-65EI	65	97.0	58.0	58.0	83	TUM-65EDI	120
TUM-70EI	70	104.0	58.0	58.0	86	TUM-70EDI	130
TUM-75EI	75	108.0	58.0	58.0	96	TUM-75EDI	130
TUM-80EI	80	114.0	58.0	58.0	100	TUM-80EDI	140
TUM-85EI	85	119.0	58.0	58.0	100	TUM-85EDI	140

1" 25.4 mm
Metric mm sizes

SHORT

PART NO.	ACROSS		DIA AT		OVERALL LENGTH	DEEP	
	FLATS	SOCKET END	SOCKET END	DRIVE END		PART NO.	OVERALL LENGTH
TU-25EI	3/4"	37.0	54.0	54.0	54	TU-25EDI	70
TU-27EI	13/16"	39.0	54.0	54.0	54	TU-27EDI	80
TU-28EI	7/8"	41.0	54.0	54.0	54	TU-28EDI	80
TU-29EI	15/16"	43.0	54.0	54.0	54	TU-29EDI	80
TU-30EI	1"	45.0	54.0	54.0	56	TU-30EDI	80
TU-31EI	1.1/16"	47.0	54.0	54.0	56	TU-31EDI	80
TU-32EI	1.1/8"	49.0	54.0	54.0	56	TU-32EDI	80
TU-34EI	1.1/4"	53.0	54.0	54.0	58	TU-34EDI	85
TU-35EI	1.5/16"	54.0	54.0	54.0	58	TU-35EDI	85
TU-36EI	1.3/8"	56.7	54.0	54.0	58	TU-36EDI	90
TU-37EI	1.7/16"	60.5	54.0	54.0	60	TU-37EDI	90
TU-38EI	1.1/2"	64.0	58.0	58.0	62	TU-38EDI	90
TU-39EI	1.5/8"	66.0	58.0	58.0	62	TU-39EDI	90
TU-40EI	1.11/16"	70.0	58.0	58.0	65	TU-40EDI	95
TU-41EI	1.3/4"	72.0	58.0	58.0	65	TU-41EDI	95
TU-42EI	1.13/16"	74.0	58.0	58.0	67	TU-42EDI	100
TU-43EI	1.7/8"	76.0	58.0	58.0	68	TU-43EDI	100
TU-44EI	1.15/16"	77.0	58.0	58.0	68	TU-44EDI	100
TU-45EI	2"	80.0	58.0	58.0	70	TU-45EDI	100
TU-46EI	2.1/16"	82.0	58.0	58.0	72	TU-46EDI	110
TU-47EI	2.3/16"	86.0	58.0	58.0	73	TU-47EDI	120
TU-48EI	2.1/4"	90.0	58.0	58.0	77	TU-48EDI	120
TU-50EI	2.3/8"	94.0	58.0	58.0	80	TU-50EDI	120
TU-51EI	2.7/16"	95.0	58.0	58.0	80	TU-51EDI	120
TU-53EI	2.9/16"	100.0	58.0	58.0	83	TU-53EDI	120
TU-54EI	2.5/8"	102.0	58.0	58.0	83	TU-54EDI	120
TU-56EI	2.3/4"	108.0	58.0	58.0	86	TU-56EDI	130
TU-57EI	2.13/16"	108.0	58.0	58.0	90	TU-57EDI	130
TU-59EI	2.15/16"	112.0	58.0	58.0	95	TU-59EDI	130
TU-60EI	3"	118.0	58.0	58.0	95	TU-60EDI	130
TU-61EI	3.1/8"	118.0	58.0	58.0	100	TU-61EDI	140
TU-63EI	3.3/8"	122.0	58.0	58.0	100	TU-63EDI	140
TUM-63.5EI	3.1/2"	122.0	58.0	58.0	100	TU-64EDI	140

1" 25.4 mm
American inch sizes

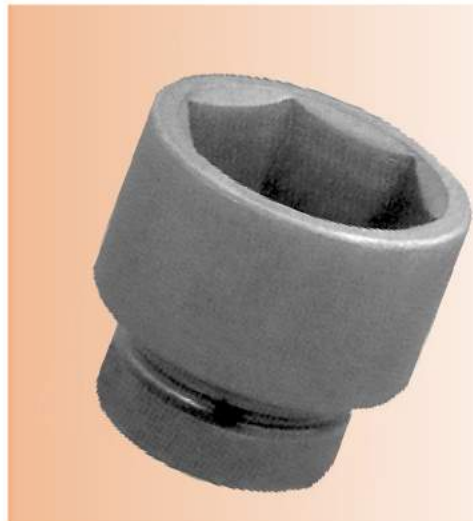
SHORT

PART NO.	ACROSS		DIA AT		OVERALL LENGTH	DEEP	
	FLATS	SOCKET END	SOCKET END	DRIVE END		PART NO.	OVERALL LENGTH
TUM-36FI	36	65.0	86.0	86.0	80	TUM-36FDI	105
TUM-38FI	38	67.0	86.0	86.0	80	TUM-38FDI	105
TUM-41FI	41	71.0	86.0	86.0	83	TUM-41FDI	105
TUM-46FI	46	78.0	86.0	86.0	86	TUM-46FDI	115
TUM-50FI	50	83.0	86.0	86.0	90	TUM-50FDI	115
TUM-55FI	55	89.0	86.0	86.0	95	TUM-55FDI	130
TUM-60FI	60	96.0	86.0	86.0	98	TUM-60FDI	130
TUM-65FI	65	99.5	86.0	86.0	102	TUM-65FDI	135
TUM-70FI	70	108.0	86.0	86.0	102	TUM-70FDI	140
TUM-75FI	75	114.0	86.0	86.0	108	TUM-75FDI	145
TUM-80FI	80	119.0	86.0	86.0	110	TUM-80FDI	150
TUM-85FI	85	128.0	86.0	86.0	115	TUM-85FDI	155
TUM-90FI	90	134.0	86.0	86.0	118	TUM-90FDI	160
TUM-95FI	95	139.0	125.0	125.0	123	TUM-95FDI	170
TUM-96FI	100	146.0	125.0	125.0	128	TUM-100FDI	180
TUM-105FI	105	154.0	125.0	125.0	132	TUM-105FDI	190
TUM-110FI	110	159.0	125.0	125.0	138	TUM-110FDI	195
TUM-115FI	115	164.0	125.0	125.0	143	TUM-115FDI	195
TUM-120FI	120	174.0	125.0	125.0	148	TUM-120FDI	200

1.1/2" 38.1 mm
Metric mm sizes

PART NO.	ACROSS		DIA AT		OVERALL LENGTH
	FLATS	SOCKET END	SOCKET END	DRIVE END	
TUM-60GI	60	105.0	122.0	122.0	140
TUM-65GI	65	105.0	122.0	122.0	140
TUM-70GI	70	117.0	122.0	122.0	145
TUM-75GI	75	117.0	122.0	122.0	145
TUM-80GI	80	127.0	127.0	127.0	145
TUM-85GI	85	127.0	127.0	127.0	145
TUM-90GI	90	140.0	127.0	127.0	160
TUM-95GI	95	140.0	127.0	127.0	160
TUM-100GI	100	155.0	127.0	127.0	160
TUM-105GI	105	155.0	127.0	127.0	160
TUM-115GI	115	175.0	127.0	127.0	170
TUM-120GI	120	175.0	127.0	127.0	170
TUM-130GI	130	190.0	152.0	152.0	190
TUM-135GI	135	190.0	152.0	152.0	190
TUM-145GI	145	210.0	152.0	152.0	195
TUM-150GI	150	210.0	152.0	152.0	195
TUM-155GI	155	220.0	152.0	152.0	200
TUM-160GI	160	220.0	152.0	152.0	200

2.1/2" 63.5 mm
Metric mm sizes


SHORT

PART NO.	ACROSS		DIA AT		OVERALL LENGTH	DEEP	
	FLATS	SOCKET END	SOCKET END	DRIVE END		PART NO.	OVERALL LENGTH
TU-31FI	1.1/16"	54.0	86.0	86.0	80	TU-31FDI	105
TU-32FI	1.1/8"	58.0	86.0	86.0	80	TU-32FDI	105
TU-36FI	1.3/8"	64.0	86.0	86.0	80	TU-36FDI	105
TU-37FI	1.7/16"	64.0	86.0	86.0	80	TU-37FDI	105
TU-38FI	1.1/2"	66.0	86.0	86.0	80	TU-38FDI	105
TU-38.5FI	1.9/16"	69.0	86.0	86.0	86	TU-38.5FDI	105
TU-39FI	1.5/8"	69.0	86.0	86.0	86	TU-40FDI	110
TU-41FI	1.3/4"	76.0	86.0	86.0	86	TU-41FDI	110
TU-42FI	1.13/16"	76.0	86.0	86.0	86	TU-42FDI	115
TU-43FI	1.7/8"	76.0	86.0	86.0	86	TU-43FDI	115
TU-45FI	2"	81.0	86.0	86.0	90	TU-45FDI	115
TU-46FI	2.1/16"	86.0	86.0	86.0	90	TU-46FDI	125
TU-47FI	2.3/16"	88.0	86.0	86.0	95	TU-47FDI	130
TU-48FI	2.1/4"	88.0	86.0	86.0	95	TU-48FDI	130
TU-50FI	2.3/8"	94.0	86.0	86.0	98	TU-50FDI	130
TU-51FI	2.7/16"	94.0	86.0	86.0	98	TU-51FDI	130
TU-53FI	2.9/16"	99.0	86.0	86.0	102	TU-53FDI	135
TU-54FI	2.5/8"	99.0	86.0	86.0	102	TU-54FDI	140
TU-56DI	2.3/4"	106.0	86.0	86.0	102	TU-56FDI	140
TU-57FI	2.13/16"	106.0	86.0	86.0	102	TU-57FDI	140
TU-59FI	2.15/16"	112.0	86.0	86.0	108	TU-59FDI	145
TU-60FI	3"	112.0	86.0	86.0	108	TU-60FDI	150
TU-61FI	3.1/8"	118.0	86.0	86.0	110	TU-61FDI	150
TU-63FI	3.3/8"	118.0	86.0	86.0	110	TU-63FDI	155
TU-64FI	3.1/2"	131.0	86.0	86.0	118	TU-64FDI	160
TU-65FI	3.3/4"	131.0	86.0	86.0	118	TU-65FDI	170
TU-66FI	3.7/8"	131.0	86.0	86.0	118	TU-66FDI	170
TU-68FI	4.1/8"	150.0	125.0	125.0	132	TU-68FDI	185
TU-69FI	4.1/4"	150.0	125.0	125.0	132	TU-69FDI	190
TU-70FI	4.1/2"	162.0	125.0	125.0	143	TU-70FDI	195
TU-71FI	4.5/8"	162.0	125.0	125.0	143	TU-71FDI	200

1.1/2" 38.1 mm
American inch sizes

PART NO.	ACROSS		DIA AT		OVERALL LENGTH
	FLATS	SOCKET END	SOCKET END	DRIVE END	
TU-48.5GI	2.1/8"	105.0	122.0	122.0	140
TU-48GI	2.1/4"	105.0	122.0	122.0	140
TU-51GI	2.7/16"	105.0	122.0	122.0	140
TU-53GI	2.9/16"	105.0	122.0	122.0	140
TU-54GI	2.5/8"	117.0	122.0	122.0	145
TU-56GI	2.3/4"	117.0	122.0	122.0	145
TU-57GI	2.13/16"	117.0	122.0	122.0	145
TU-59GI	2.15/16"	117.0	122.0	122.0	145
TU-60GI	3"	127.0	127.0	127.0	145
TU-61GI	3.1/8"	127.0	127.0	127.0	145
TU-63GI	3.3/8"	127.0	127.0	127.0	145
TU-64GI	3.1/2"	140.0	127.0	127.0	160
TU-65GI	3.3/4"	140.0	127.0	127.0	160
TU-66GI	3.7/8"	140.0	127.0	127.0	160
TU-68GI	4.1/8"	155.0	127.0	127.0	160
TU-69GI	4.1/4"	160.0	127.0	127.0	170
TU-70GI	4.1/2"	175.0	127.0	127.0	170
TU-71GI	4.5/8"	175.0	127.0	127.0	170
TU-72GI	4.7/8"	190.0	152.0	152.0	190
TU-73GI	5"	190.0	152.0	152.0	190
TU-74GI	5.1/4"	190.0	152.0	152.0	190
TU-75GI	5.3/8"	210.0	152.0	152.0	195
TU-76GI	5.5/8"	210.0	152.0	152.0	195
TU-77GI	5.3/4"	210.0	152.0	152.0	195
TU-78GI	6"	220.0	152.0	152.0	200
TU-79GI	6.1/8"	220.0	152.0	152.0	200
TU-80GI	6.1/4"	220.0	152.0	152.0	200

2.1/2" 63.5 mm
American inch sizes

PART NO.	ACROSS FLATS	DIA AT SOCKET END	DIA AT DRIVE END	OVERALL LENGTH
TUM-120HI	120	182.0	175.0	182
TUM-130HI	130	194.0	175.0	190
TUM-135HI	135	198.0	175.0	198
TUM-145HI	145	214.0	175.0	214
TUM-150HI	150	218.0	175.0	214
TUM-155HI	155	228.0	175.0	214
TUM-165HI	165	237.0	175.0	231
TUM-170HI	170	244.0	175.0	231
TUM-175HI	175	249.0	175.0	231
TUM-180HI	180	257.0	175.0	237
TUM-195HI	195	277.0	175.0	245
TUM-200HI	200	282.0	175.0	250
TUM-215HI	215	298.0	175.0	263
TUM-230HI	230	318.0	175.0	279
TUM-235HI	235	327.0	175.0	279

PART NO.	ACROSS FLATS	DIA AT SOCKET END	DIA AT DRIVE END	OVERALL LENGTH
TUM-71HI	4.5/8"	177.0	175.0	182
TUM-73HI	4.7/8"	187.0	175.0	190
TUM-76HI	5.1/4"	197.0	175.0	198
TUM-77HI	5.3/8"	203.0	175.0	198
TUM-78HI	5.5/8"	213.0	175.0	214
TUM-79HI	5.3/4"	213.0	175.0	214
TUM-80HI	6"	223.0	175.0	214
TUM-81HI	6.1/8"	227.0	175.0	214
TUM-83HI	6.1/2"	237.0	175.0	231
TUM-84HI	6.7/8"	249.0	175.0	231
TUM-84HI	7.1/4"	263.0	175.0	237
TUM-85HI	7.5/8"	277.0	175.0	245
TUM-86HI	8"	287.0	175.0	263
TUM-87HI	8.3/8"	297.0	175.0	263
TUM-89HI	9.1/8"	322.0	175.0	279

3.1/2" 88.9 mm
Metric mm sizes

3.1/2" 88.9 mm
American inch sizes

• TULEX SPECIAL IMPACT APPLICATION SOCKETS AND ACCESSORIES :



Tulex offers a range of special sockets. We may have what you need as a non catalogue item or our experienced staff of tooling experts can design and produce application specific fastener tools to suit your extract needs. Given below are some illustrations of special sockets manufactured by us.

• Thin Walled Impact Sockets :

Tulex Thin Walled Impact Sockets are used at places of inaccessibility where there are restrictions due to the diameter at the nose end of the socket. In this case the diameter of the nose end is reduced. 12 point Thin Walled Sockets are available on request. Thin Walled Impact Sockets are manufactured in 3/8" (10mm), 1/2" (12.5mm), 3/4" (20mm) and 1" (25.4mm) square drives. Thin walled deep hexagon sockets are also available on request.

• Surface Drive Impact Sockets :

Tulex Surface Drive Sockets are designed for use on single or multiple spindle power tools (Non Impact Type). Specially relieved corners at the hex opening provides a floating action thus permitting the socket to engage the nut on the surface of the flat hex rather than on the corners. The large openings on six corners of the opening create a floating action that allows the socket to slip quickly and easily on to the nut or bolt. These are ideal for compensating for imperfect alignment between the tool and the fastener. These are generally recommended for impact usage. This type of a free corner profile distributes the surface loads and relieves the possible stress areas. The torque transmitting capability is increased and the high stress concentrating points are completely eliminated increasing the impact resistance of the fastener.

• Flank Drive Impact Hex Sockets (6 Flank points) :

Tules Flank Drive Socket can also be called a fast lead socket. These are basically designed for use with power tools and multiple spindle power tools. A slight recess is provided on the 6 corner points of the hex, which provides a speedy complete engagement with the nut almost instantly. This speeds productivity and extends tool life. Engagement is possible without starting and stopping the tool for each nut.

• Fixed Magnetic Sockets and Spring Loaded Magnetic Power Sockets :

Tulex Magnetic sockets holds the fastener in the driving position even when working straight down. Time wasting motions are eliminated when working in hard to reach areas. Magnetic Spring Loaded Sockets also known as Bolt Clearance Sockets allows the bolt or stud to retract into the socket body due to the spring loaded or hollow cylinder magnet as the nut is run down.

• # 5, Spline Drive Impact Sockets :

These sockets are available from 19mm across flat to 80 mm across flat and 3/4" across flat to 4" across flat and 21 mm across flat to 52 mm across flat and 3/4" across flat to 2.11/16". The outside diameter at the socket end consists of a hex across flat portion and the outside diameter on the drives end consists of splines. These are available in standard and deep lengths.

• 1/4" (6.35mm) Male Hex Shank Extension Bars :

This type of special Extension Bar has on one end Male Square and on the other end male 1/4" Hex Shank. These are available in 1/4" and 3/8" Square Drives with overall lengths ranging from 50 mm to 150 mm. It is provided with a locking arrangement on the male square drive.

• TULEX AUTO REWIND AIR HOSE REEL :

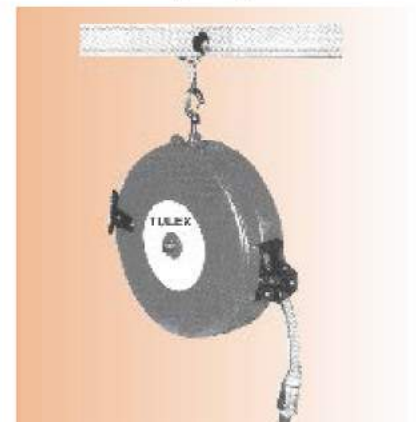
ADVANTAGES

- Can be fixed OR suspended.
- Very little effort required for pulling.
- PU hose gets wound on drum preventing damage.
- Quickens operation as compared to straight length tubings.

APPLICATIONS

- Automobile shop floors.
- Garages, Petrol Pumps for cleaning and air filling.
- Also can be used in assembly lines of 2 wheelers, cars, HCV, LCV engine assembly lines.
- 2-Wheeler Service stations.

Note : These are available in 4.5 metres, 8 metres and 10 metres hose lengths.



• TULEX IMPACT SQUARE DRIVE ADAPTORS :



Tulex Impact square drive Adaptors are used as a convertor to permit use of sockets with impact wrenches of different square drive sizes i.e. higher or lower. These are available in 1/4" (6.3mm), 3/8" (9.5mm), 1/2" (12.7mm), 3/4" (19mm), 1" (25.4mm), 1.1/2" (38.1mm), and 2.1/2" (63.5mm) square drives of adjacent reducing / increasing combinations of male and female drives. These are of two designs-Square Drive Adaptor with two cross holes for conventional impact wrenches and square drive adapter with groove or locking ring and pin arrangements for impact wrenches with cross holes on male square drive. It may be noted that torque capacity of these adaptors is limited to torque capacity of smaller square drive sizes.

PART NO.	SQUARE DRIVE		DIA AT SQUARE END	OVERALL LENGTH
	FEMALE	MALE		
TUA-ABI	1/4"	3/8"	14	27
TUA-BAI	3/8"	1/4"	20	32
TUA-BCI	3/8"	1/2"	20	35
TUA-CBI	1/2"	3/8"	26	38
TUA-DCI	3/4"	1/2"	48	55
TUA-CDI	1/2"	3/4"	26	44
TUA-EDI	1"	3/4"	54	70
TUA-DEI	3/4"	1"	48	65
TUA-EFI	1"	1.1/2"	54	90
TUA-FEI	1.1/2"	1"	86	110
TUA-FGI	1.1/2"	2.1/2"	86	135
TUA-GFI	2.1/2"	1.1/2"	125	165

• TULEX IMPACT EXTENSION BARS :



Tulex Impact Extension Bar is a coupler interposed between the socket and the driving tool. This is used to reach inaccessible places where the driving tool cannot reach or the clearance for operation of driving tool is not available. These are of two designs-Extension Bar with two cross holes for conventional impact wrench and Extension Bar with cross hole and groove for locking pin and ring for impact wrenches with cross hole in male square drive. Extension Bar with different combination of square drives and lengths can be manufactured against specific requirements. The range covers 1/4" (6.3mm) to 2.1/2" (63mm) square drives in different lengths.

PART NO.	SQUARE DRIVE	OVERALL LENGTH
TUE-55AI	1/4"	55
TUE-100AI	1/4"	100
TUE-150AI	1/4"	150
TUE-75BI	3/8"	75
TUE-150BI	3/8"	150
TUE-300BI	3/8"	300
TUE-75CI	1/2"	75
TUE-125CI	1/2"	125
TUE-250CI	1/2"	250
TUE-175DI	3/4"	175
TUE-210DI	3/4"	210
TUE-430DI	3/4"	430
TUE-175EI	1"	175
TUE-200EI	1"	200
TUE-400EI	1"	400
TUE-200FI	1.1/2"	200
TUE-250FI	1.1/2"	250
TUE-500FI	1.1/2"	500
TUE-255GI	2.1/2"	255
TUE-380GI	2.1/2"	380
TUE-510GI	2.1/2"	510

• TULEX IMPACT UNIVERSAL JOINT :



Tulex Swivel impact Joint is a coupler interposed between impact socket and the impact wrench. It is useful for tightening nuts located at difficult or angular positions, which cannot be reached with standard tools. These are available in 3/8" (9.5mm), 1/2" (12.7mm), 3/4" (19mm), 1" (25.4mm) and 1.1/2"(38.1mm) square drives.

PART NO.	SQUARE DRIVE	OVERALL LENGTH
TUSJ-BI	3/8"FX3/8"M	53.0
TUSJ-CI	1/2"FX1/2"M	64.0
TUSJ-DI	3/4"FX3/4"M	85.0
TUSJ-EI	1"FX1"M	108.5

• TULEX SWIVEL IMPACT SOCKETS / EXTENSION SOCKETS :



Tulex Swivel impact Socket has a swivel joint as a built in feature. These are useful for tightening nuts located at difficult angular positions, which cannot be reached with standard sockets. These are available in 3/8" (9.5mm) and 1/2" (12.7mm) square drives to cover nut sizes from 7mm to 24mm across flat. Tulex Swivel Impact Extension Sockets are used where requirements of bolt clearance exists.

TULEX SWIVEL IMPACT SOCKETS

PART NO.	ACROSS FLATS	DIA AT HEX END	DIA AT SQUARE END	OVERALL LENGTH
TUSM-7BI	7	12.7	19	58
TUSM-8BI	8	13.5	19	58
TUSM-10BI	10	16.4	20	58
TUSM-11BI	11	16.9	20	58
TUSM-12BI	12	19.0	22	58
TUSM-13BI	13	20.0	22	62
TUSM-14BI	14	21.0	22	62
TUSM-15BI	15	22.8	22	62
TUSM-16BI	16	23.9	22	62
TUSM-17BI	17	24.8	22	62
TUSM-18BI	18	26.6	22	65
TUSM-19BI	19	26.6	22	65

3/8" 9.5 mm
Metric mm sizes

PART NO.	ACROSS FLATS	DIA AT HEX END	DIA AT SQUARE END	OVERALL LENGTH
TUSM-10C	10	17.6	26	70
TUSM-11C	11	18.9	26	70
TUSM-12C	12	19.4	26	70
TUSM-13C	13	21.7	26	70
TUSM-14C	14	22.6	26	74
TUSM-15C	15	23.8	26	74
TUSM-16C	16	25.1	26	80
TUSM-17C	17	26.2	26	80
TUSM-18C	18	27.6	26	80
TUSM-19C	19	28.5	30	80
TUSM-21C	21	31.4	30	80
TUSM-22C	22	32.6	30	80
TUSM-23C	23	33.9	30	80
TUSM-24C	24	35.1	30	80

1/2" 12.7 mm
Metric mm sizes

TULEX SWIVEL EXTENSION SOCKETS

OVERALL LENGTH ACROSS FLAT	100			DIA AT HEX END	DIA AT SQUARE END
	PART NO.	150 PART NO.	200 PART NO.		
7	TUSE-7BX	TUSE-7BY	TUSE-7BZ	12.7	19
8	TUSE-8BX	TUSE-8BY	TUSE-8BZ	13.5	19
10	TUSE-10BX	TUSE-10BY	TUSE-10BZ	16.4	19
11	TUSE-11BX	TUSE-11BY	TUSE-11BZ	116.9	20
12	TUSE-12BX	TUSE-12BY	TUSE-12BZ	119.0	20
13	TUSE-13BX	TUSE-13BY	TUSE-13BZ	20.0	20
14	TUSE-14BX	TUSE-14BY	TUSE-14BZ	21.0	22
16	TUSE-16BX	TUSE-16BY	TUSE-16BZ	23.9	22
17	TUSE-17BX	TUSE-17BY	TUSE-17BZ	24.8	22

3/8" 9.5 mm
Metric mm sizes

OVERALL LENGTH ACROSS FLAT	100			DIA AT HEX END	DIA AT SQUARE END
	PART NO.	150 PART NO.	200 PART NO.		
10	TUSE-10CX	TUSE-10CY	TUSE-10CZ	17.6	25
11	TUSE-11CX	TUSE-11CY	TUSE-11CZ	18.9	25
12	TUSE-12CX	TUSE-12CY	TUSE-12CZ	19.4	25
13	TUSE-13CX	TUSE-13CY	TUSE-13CZ	21.7	25
14	TUSE-14CX	TUSE-14CY	TUSE-14CZ	22.6	25
15	TUSE-15CX	TUSE-15CY	TUSE-15CZ	23.8	26
16	TUSE-16CX	TUSE-16CY	TUSE-16CZ	25.1	26
17	TUSE-17CX	TUSE-17CY	TUSE-17CZ	26.2	26
18	TUSE-18CX	TUSE-18CY	TUSE-18CZ	27.6	26
19	TUSE-19CX	TUSE-19CY	TUSE-19CZ	28.5	28
21	TUSE-21CX	TUSE-21CY	TUSE-21CZ	31.4	28
22	TUSE-22CX	TUSE-22CY	TUSE-22CZ	32.6	30
23	TUSE-23CX	TUSE-23CY	TUSE-23CZ	33.9	30
24	TUSE-24CX	TUSE-24CY	TUSE-24CZ	35.1	30

1/2" 12.7 mm
Metric mm sizes

• TULEX IMPACT STUD TIGHTENERS :



Tulex Stud Tighteners also known as stud drivers is used for speedier tightening of threaded studs with the help of an impact wrench. This is ideal for use in the assembly and maintenance of engines. The range covers stud diameters M5 to M36 (metric) & 1/4" (6.35mm) to 1.1/2" (38.1) UNF/BSF (SAE/BRITISH) in 3/8" to 1" square drives. The tool has a cross hole and groove for locking pin and ring arrangement.

Note : Stud tighteners to suit BSW, BSF, UNC or UNF Threaded studs also available on request as specials. Extra deep stud tighteners also available on request.

3/8" 9.5 mm
Metric mm sizes

PART NO.	STUD SIZE & PITCH	OVERALL LENGTH
TUST-5/0.8B	M5x0.80	32
TUST-6/1B	M6x1.00	35
TUST-7/1B	M7x1.00	35
TUST-8/1.25B	M8x1.25	37
TUST-8/1B	M8x1.00	37
TUST-10/1.5B	M10x1.50	40
TUST-10/1.25B	M10x1.25	40

PART NO.	STUD SIZE & PITCH	OVERALL LENGTH
TUST-16/2D	M16x2.00	65
TUST-20/2.5D	M20x2.50	75
TUST-24/3D	M24x3.00	80

3/4" 19 mm
Metric mm sizes

1/2" 12.7 mm
Metric mm sizes

PART NO.	STUD SIZE & PITCH	OVERALL LENGTH
TUST-6/1C	M6x1.00	44
TUST-7/1C	M7x1.00	44
TUST-8/1.25C	M8x1.25	46
TUST-8/1C	M8x1.00	46
TUST-10/1.5C	M10x1.50	50
TUST-10/1.25C	M10x1.25	50
TUST-12/1.75C	M12x1.75	53
TUST-12/1.25C	M12x1.25	53
TUST-14/2C	M14x2.00	57
TUST-14/1.5C	M14x1.50	57
TUST-16/2C	M16x2.00	59
TUST-16/1.5C	M16x1.50	59

PART NO.	STUD SIZE & PITCH	OVERALL LENGTH
TUST-24/3E	M24x3.00	83
TUST-27/3E	M27x3.00	87
TUST-30/3.5E	M30x3.50	92
TUST-33/3.5E	M33x3.50	96
TUST-36/4E	M36x4.00	100

1" 25.4 mm
Metric mm sizes

• TULEX SINGLE HEX IMPACT EXTENSION SOCKETS :

Tulex Single Hex impact Extension Sockets are sockets with built in integral extension. These are suitable for impact applications and are available in single hex configuration in rigid as well as swivel joint design. These are provided with locking ring and pin. It is available in 100 mm, 150mm and 200mm overall lengths in 3/8" (6.35mm) and 1/2" (12.7mm) square drives to cover nut across flat sizes 7mm to 27mm. These are ideal for use in automobile industry.



3/8" 9.5 mm
Metric mm sizes

OVERALL LENGTH ACROSS FLAT	100 PART NO.	150 PART NO.	200 PART NO.	DIA AT HEX END	DIA AT SQUARE END
7	TUES-7BXI	TUES-7BYI	TUES-7BZI	12.7	19
8	TUES-8BXI	TUES-8BYI	TUES-8BZI	13.5	19
10	TUES-10BXI	TUES-10BYI	TUES-10BZI	16.4	19
11	TUES-11BXI	TUES-11BYI	TUES-11BZI	16.9	20
12	TUES-12BXI	TUES-12BYI	TUES-12BZI	19.0	20
13	TUES-13BXI	TUES-13BYI	TUES-13BZI	20.0	20
14	TUES-14BXI	TUES-14BYI	TUES-14BZI	21.0	22
16	TUES-16BXI	TUES-16BYI	TUES-16BZI	23.9	22
17	TUES-17BXI	TUES-17BYI	TUES-17BZI	24.8	22

OVERALL LENGTH ACROSS FLAT	100 PART NO.	150 PART NO.	200 PART NO.	DIA AT HEX END	DIA AT SQUARE END
10	TUES-10CXI	TUES-10CYI	TUES-10CZI	17.6	25
11	TUES-11CXI	TUES-11CYI	TUES-11CZI	18.9	25
12	TUES-12CXI	TUES-12CYI	TUES-12CZI	19.4	25
13	TUES-13CXI	TUES-13CYI	TUES-13CZI	21.7	25
14	TUES-14CXI	TUES-14CYI	TUES-14CZI	22.6	25
16	TUES-16CXI	TUES-16CYI	TUES-16CZI	25.1	26
17	TUES-17CXI	TUES-17CYI	TUES-17CZI	26.2	26
18	TUES-18CXI	TUES-18CYI	TUES-18CZI	27.6	26
19	TUES-19CXI	TUES-19CYI	TUES-19CZI	28.5	28
21	TUES-21CXI	TUES-21CYI	TUES-21CZI	31.4	28
22	TUES-22CXI	TUES-22CYI	TUES-22CZI	32.6	30
23	TUES-23CXI	TUES-23CYI	TUES-23CZI	33.9	30
24	TUES-24CXI	TUES-24CYI	TUES-24CZI	35.1	30
27	TUES-27CXI	TUES-27CYI	TUES-27CZI	38.9	30

1/2" 12.7 mm
Metric mm sizes

• TULEX IMPACT HEX ADAPTORS (HEX / ALLEN BIT SOCKETS) :



These are used for tightening of socket cap screws and bolts with pneumatic / hydraulic impact wrenches. These are available in 1/4" (6.35mm), 3/8" (9.5mm), 1/2" (12.7mm), 3/4" (19mm), 1" (25.4mm) and 1.1/2" (38.1mm) square drives covering across flat sizes ranging from 3 mm to 50 mm (1/8" to 2" SAE). These Impact Hex Adaptors has a provision for locking pin and 'O' ring onto the impact wrench. For particular applications, we can also cater to requirement of extended length Hex Bit Sockets as per client specifications.

Note : Specific sizes and Lengths can be supplied on request.

1/4" 6.35 mm
Metric mm sizes

PART NO.	ACROSS FLATS	HEX LENGTH	OVERALL LENGTH
TUHAM-3AI	3	16	40
TUHAM-4AI	4	16	40
TUHAM-5AI	5	16	40
TUHAM-6AI	6	16	40

PART NO.	ACROSS FLATS	HEX LENGTH	OVERALL LENGTH
TUHA-10AI	1/8"	16	40
TUHA-11AI	5/32"	16	40
TUHA-12AI	3/16"	16	40
TUHA-13AI	7/32"	16	40
TUHA-14AI	1/4"	16	40

1/4" 6.35 mm
Metric mm sizes

PART NO.	ACROSS FLATS	HEX LENGTH	OVERALL LENGTH
TUHAM-3BI	3	20	44
TUHAM-4BI	4	20	44
TUHAM-5BI	5	20	44
TUHAM-6BI	6	20	44
TUHAM-8BI	8	20	44
TUHAM-10BI	10	25	50

3/8" 9.5 mm
Metric mm sizes

PART NO.	ACROSS FLATS	HEX LENGTH	OVERALL LENGTH
TUHA-10BI	1/8"	20	44
TUHA-11BI	5/32"	20	44
TUHA-12BI	3/16"	20	44
TUHA-13BI	7/32"	20	44
TUHA-14BI	1/4"	20	44
TUHA-16BI	5/16"	20	44
TUHA-18BI	3/8"	25	50

3/8" 9.5 mm
American inch sizes

PART NO.	ACROSS FLATS	HEX LENGTH	OVERALL LENGTH
TUHAM-6CI	6	25	55
TUHAM-8CI	8	25	55
TUHAM-10CI	10	25	55
TUHAM-12CI	12	30	63
TUHAM-14CI	14	30	63
TUHAM-17CI	17	30	63

1/2" 12.7 mm
Metric mm sizes

PART NO.	ACROSS FLATS	HEX LENGTH	OVERALL LENGTH
TUHA-14CI	1/4"	25	55
TUHA-16CI	5/16"	25	55
TUHA-18CI	3/8"	25	55
TUHA-20CI	1/2"	30	63
TUHA-21CI	9/16"	30	63
TUHA-23CI	5/8"	30	63

1/2" 12.7 mm
American inch sizes

PART NO.	ACROSS FLATS	HEX LENGTH	OVERALL LENGTH
TUHAM-12DI	12	30	80
TUHAM-14DI	14	30	80
TUHAM-17DI	17	30	80
TUHAM-19DI	19	45	95
TUHAM-22DI	22	45	95
TUHAM-24DI	24	45	95

3/4" 19 mm
Metric mm sizes

PART NO.	ACROSS FLATS	HEX LENGTH	OVERALL LENGTH
TUHA-20DI	1/2"	30	80
TUHA-21DI	9/16"	30	80
TUHA-23DI	5/8"	30	80
TUHA-25DI	3/4"	45	95
TUHA-28DI	7/8"	45	95

3/4" 19 mm
American inch sizes

PART NO.	ACROSS FLATS	HEX LENGTH	OVERALL LENGTH
TUHAM-17EI	17	40	100
TUHAM-19EI	19	40	100
TUHAM-22EI	22	40	100
TUHAM-24EI	24	50	110
TUHAM-27EI	27	50	110
TUHAM-30EI	30	50	110
TUHAM-32EI	32	50	110
TUHAM-36EI	36	50	110

1" 25.4 mm
Metric mm sizes

PART NO.	ACROSS FLATS	HEX LENGTH	OVERALL LENGTH
TUHA-18EI	3/8"	40	100
TUHA-20EI	1/2"	40	100
TUHA-21EI	9/16"	40	100
TUHA-23EI	5/8"	40	100
TUHA-25EI	3/4"	40	100
TUHA-28EI	7/8"	40	100
TUHA-29EI	15/16"	50	110
TUHA-30EI	1"	50	110
TUHA-31EI	1.1/16"	50	110
TUHA-32EI	1.1/8"	50	110

1" 25.4 mm
American inch sizes

PART NO.	ACROSS FLATS	HEX LENGTH	OVERALL LENGTH
TUHAM-30FI	30	50	140
TUHAM-32FI	32	50	140
TUHAM-36FI	36	55	145
TUHAM-41FI	41	60	160
TUHAM-46FI	46	70	170
TUHAM-50FI	50	70	170

1.1/2" 38.1 mm
Metric mm sizes

PART NO.	ACROSS FLATS	HEX LENGTH	OVERALL LENGTH
TUHA-30FI	1"	50	140
TUHA-31FI	1.1/16"	50	140
TUHA-32FI	1.1/8"	50	140
TUHA-34FI	1.1/4"	50	140
TUHA-38FI	1.1/2"	55	140
TUHA-41FI	1.3/4"	70	170
TUHA-45FI	2"	70	170

1.1/2" 38.1 mm
American inch sizes

• TULEX IMPACT HEX DRIVERS / NUT RUNNERS :



Tulex Impact Hex Drivers / Nut Runners is a tool designed for operation with a pneumatic nut runner. The Hex Driver has a male Hex Drive on one end, which fits into the female hex shank of the nut runner and on the other end is a single hex socket. The range covers 1/4" (6.35 mm) and 5/16" (8 mm) hex drives for nut sizes 4 mm to 20 mm in three lengths i.e. 75 mm, 100 mm and 150 mm. Other sizes including SAE can be supplied against requests.

Note: 1. 5/16" Hex Drive also available on request.
2. Magnetic Hex Drivers can also be supplied as specials on request.

OVERALL LENGTH	75	100	150
ACROSS FLATS SIZES	PART NO.	PART NO.	PART NO.
4	TUHD-4W	TUHD-4X	TUHD-4Y
5	TUHD-5W	TUHD-5X	TUHD-5Y
6	TUHD-6W	TUHD-6X	TUHD-6Y
7	TUHD-7W	TUHD-7X	TUHD-7Y
8	TUHD-8W	TUHD-8X	TUHD-8Y
9	TUHD-9W	TUHD-9X	TUHD-9Y
10	TUHD-10W	TUHD-10X	TUHD-10Y
11	TUHD-11W	TUHD-11X	TUHD-11Y
12	TUHD-12W	TUHD-12X	TUHD-12Y
13	TUHD-13W	TUHD-13X	TUHD-13Y
14	TUHD-14W	TUHD-14X	TUHD-14Y
15	TUHD-15W	TUHD-15X	TUHD-15Y
16	TUHD-16W	TUHD-16X	TUHD-16Y
17	TUHD-17W	TUHD-17X	TUHD-17Y
18	TUHD-18W	TUHD-18X	TUHD-18Y
19	TUHD-19W	TUHD-19X	TUHD-19Y
20	TUHD-20W	TUHD-20X	TUHD-20Y

1/4" 6.35 mm
Metric mm sizes

• **TULEX IMPACT TORX BIT SOCKET (INTEGRAL) :** 

Tulex Torx Bit Sockets are used for tightening of Torx screws & bolts with pneumatic / hydraulic impact wrenches. These are available in 3/8" (9.5 mm) & 1/2" (12.7 mm) square drives covering Torx point sizes ranging from T10 to T40. These impact Torx Bit sockets has a provision for locking pin and 'O' ring onto the impact wrench. These are widely used in automobile assembly lines.

3/8" SQUARE DRIVE :

PART NO.	POINT SIZE	OVERALL LENGTH (IN MM)
TUTXM-10BI	T10	44
TUTXM-15BI	T15	44
TUTXM-20BI	T20	44
TUTXM-25BI	T25	44
TUTXM-27BI	T27	44
TUTXM-30BI	T30	44
TUTXM-40BI	T40	44

1/2" SQUARE DRIVE :

PART NO.	POINT SIZE	OVERALL LENGTH (MM)
TUTXM-10CI	T10	50
TUTXM-15CI	T15	50
TUTXM-20CI	T20	50
TUTXM-25CI	T25	50
TUTXM-27CI	T27	55
TUTXM-30CI	T30	55
TUTXM-40CI	T40	55



We can also manufacture specific sizes not mentioned in our above tables, as per clients requests.

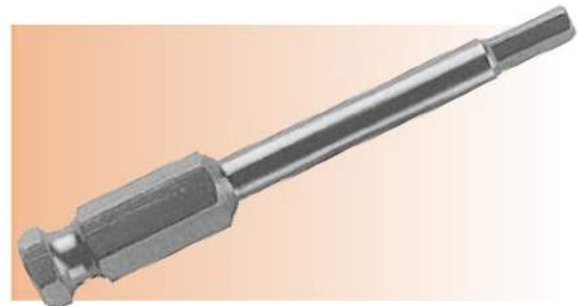
• **TULEX ALLEN HEAD POWER BIT :** 

Tulex Allen Head Power Bits is used for operation with a pneumatic screw driver. The Power Bit has a male Hex Drive on one end which fits into the female hex shank of the screw driver and on the other end is a male Allen Head Bit. These are used for tightening of Allen Head Cap Screws and Bolts. These are widely used in automobile assembly lines. The range covers 1/4" (6.35 mm) hex drives for Allen Head hex sizes from 3 mm to 10 mm. Other sizes including SAE (inch) sizes can be supplied against specific requests.

Note: 5/16" Hex Drive also available on request.

1/4" Hex Male Drive x Allen Bit

OVERALL LENGTH	50 MM	75 MM	100 MM
ACROSS FLAT HEX SIZE (IN MM)	PART NO.	PART NO.	PART NO.
3	TUHB-3Z	TUHB-3W	TUHB-3X
4	TUHB-4Z	TUHB-4W	TUHB-4X
5	TUHB-5Z	TUHB-5W	TUHB-5X
6	TUHB-6Z	TUHB-6W	TUHB-6X
8	TUHB-8Z	TUHB-8W	TUHB-8X
10	TUHB-10Z	TUHB-10W	TUHB-10X



We can also manufacture any special size not covered in above range as per clients requests.

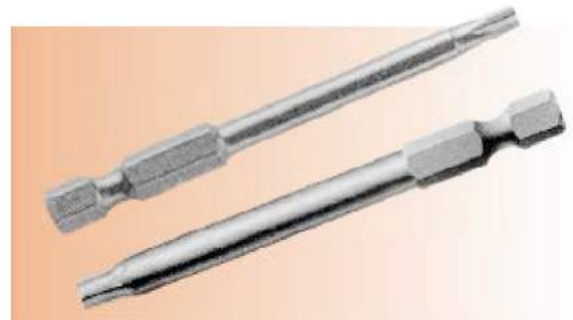
• **TULEX TORX HEAD POWER BIT :** 

Tulex Torx Head Power Bits is used for operation with a pneumatic screw driver. The Power Bit has a male Hex Drive on one end which fits into the female hex shank of the screw driver and on the other end is a male Torx Bit. These are used for tightening of Torx Head Screws and Bolts. These are widely used in automobile assembly lines. The range covers 1/4" (6.35 mm) hex drives for Torx Point Size T10 to T40.

Note: 5/16" Hex Drive also available on request.

1/4" Hex Male Drive x Torx Bit

OVERALL LENGTH	50 MM	75 MM	100 MM	150 MM
POINT SIZE	PART NO.	PART NO.	PART NO.	PART NO.
T10	TUTX-10Z	TUTX-10W	TUTX-10X	TUTX-10Y
T15	TUTX-15Z	TUTX-15W	TUTX-15X	TUTX-15Y
T20	TUTX-20Z	TUTX-20W	TUTX-20X	TUTX-20Y
T25	TUTX-25Z	TUTX-25W	TUTX-25X	TUTX-25Y
T27	TUTX-27Z	TUTX-27W	TUTX-27X	TUTX-27Y
T30	TUTX-30Z	TUTX-30W	TUTX-30X	TUTX-30Y
T40	TUTX-40Z	TUTX-40W	TUTX-40X	TUTX-40Y

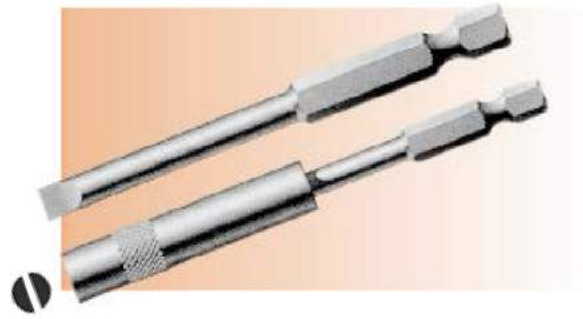


We can also manufacture any special size not covered in above range as per clients requests.

• **TULEX SPRING LOADED SLOTTED BIT FINDER & SLOTTED POWER BITS :**

Tulex Spring Loaded slotted Screw Bit Finder is used widely in automobile assembly lines. Its main function is to easily locate & to tighten the screws in a faster manner. It is available for a range of slotted screws as shown in below given table.

PART NO.	SCREW SIZE	BLADE THICKNESS (IN INCHES)	BLADE WIDTH (IN INCHES)
TUBF-6	6F-7R	0.038	0.250
TUBF-7	7F-8R	0.040	0.275
TUBF-8	8F-10R	0.042	0.312
TUBF-10	10F-12R	0.046	0.360
TUBF-12	12F-14R	0.050	0.375
TUBF-14	14F-16R	0.055	0.475



We can also manufacture specific sizes not mentioned in our above tables, as per clients requests.

Note : We also manufacture Slotted Power bits without the Finder.

• **TULEX SPRING LOADED QUICK CHANGE ADAPTORS :**

These are also called as Screw Driver Bit Holders. It has a 3/8" square drive female on one side and a 1/4" Hex Drive female on the other end. It is also available in 1/2" Square Drive.

It has a spring release shell which retracts to accept the 1/4" hex power type bits and Nut Runners. It is available in Black Industrial Rust Resistant Finish. It is ideal for products where positive bit retention is required.

The name Quick Change Adaptor is quite apt for this tool. It acts as an adaptor / mediator between the impact tool and the fastener tightening tool. This adaptor helps in quickly changing the fastener tightening tool to suit different tools.

TULEX QUICK CHANGE ADAPTOR

PART NO.	SIZE
TUQC-BA	3/8" S.D. X 1/4" HEX FEMALE
TUQC-CA	1/2" S.D. X 1/4" FEMALE



• **TULEX HEAVY DUTY CROW FOOT WRENCHES :**

Description & Uses :

TULEX CROW FOOT WRENCHES, as the name suggest are shaped as a Crow's Foot. These wrenches are mainly used for assembling of those nuts and bolts, which are inaccessible and the movement of ordinary spanners not possible. Common uses of these spanners are in **Automobile** and **Engineering Case Equipment Manufacturing Industries**, although it can be used for a variety of other applications.

Technical Details :

TULEX CROW FOOT WRENCHES (Straight Open End Type & Bihex Flare Nut Type) are manufactured from **Chrome Molybdenum Alloy Steel (EN-24)** or as per Clients requirements and needs. It is manufactured by machining process. A suitable **Hardness value** in the range of **40 to 44 HRC** is maintained for the Wrenches. Our Crowfoot Wrenches are manufactured as per **IS Standards**. Torque Values for these wrenches are in accordance with IS:6131-1980. These are coated in **black rust resistant industrial finish or chrome finish as per the needs of the client.**

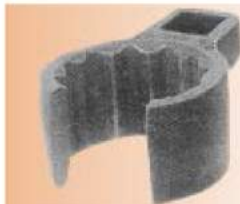
Sizes : In Metric (mm sizes)

TULEX CROW FOOT WRENCHES are available in **3/8", 1/2" & 3/4" Square Drive Sizes.**

Given below are brief details.

1. For **3/8" Square Drive - Across Flat size ranges from 8 mm to 27 mm.**
2. For **1/2" Square Drive - Across Flat size ranges from 10 mm to 50 mm.**
3. For **3/4" Square Drive - Across Flat size ranges from 19 mm to 60 mm.**

We can also manufacture special sizes & inch sizes as per the needs of the client.



• **TULEX FLEXIBLE MAGNETIC RETREIVER (PICK-UP) TOOL :**



Tulex Flexible Magnetic Pick-Up is a tool which is used to easily retrieve dropped screws, nuts, tools, bolts and other steel parts from hard to reach inaccessible awkward places.

The Flexible Magnetic Retriever consists of a long flexible non elastic hose having a magnet at one end and a good comfortable hand grip at the other.

It has wide applications in all industries where there is a need for picking up fallen metal scraps / pieces from difficult to reach spaces during assembly / maintenance of parts, which is not possible by way of hand.

The flexible hose has the ability to snake through difficult areas to pick up desired metal objects.

With the help of this tool you will have no more trouble trying to get the object you want to pick up and to stick to something you don't need.

With the help of the Magnetic Pick-up, you can easily locate and lift metal objects that have dropped while working into oil, water, chemical, or in any other liquid medium.

Also while working on engines, boats, machine assemblies or any place where pipes, panels or parts get in the way, this tool shall help and aide the user to locate and retrieve metal objects that have been dropped.

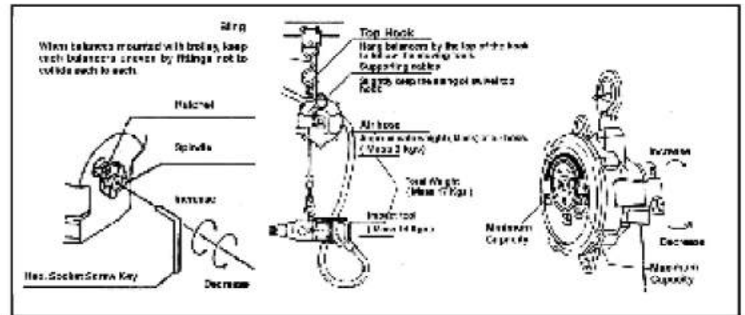
Our pick-up tools have extra high flux magnets having greater pick up power to lift objects weighing up to 1 kg without any fuss.

This tool shall optimize the output and will minimize the time taken in getting out lost objects, thus increasing the productivity and yield of the user.

Sizes and Specifications :

PART NO.	FLEXIBLE HOSE LENGTH
TUMPT-20	20"
TUMPT-24	24"

If required, we can manufacture magnetic pick-up tools as per your specific lengths and requirements.



• **TULEX SPRING (LOAD) BALANCERS :**



Description :

Tulex Spring Balancers have been designed specifically to reduce the operators fatigue when working with Heavy Tools. Tulex Spring Balancer carries the load making it easy for the operator to concentrate on his work more effectively.

Tulex Spring Balancer's can be properly balanced by adjusting the spring tension and the Balancer becomes almost weightless in the hands of the operator and can be moved up and down with very little effort. Our range of 15 models covers balancing capacity requirement from 0.25 kgs to 120 kgs. Apart from the standard Rope Travel, we can also cater to the requirements of Extra Long Rope Travel as per the clients specifications. We can also provide spares of Spring Balancers, if required.

Applications :

1. Automotive Sector to suspend the portable Pneumatic tools. Normal area of use is Engine Assembly, 2-wheeler Assembly, TV & VCR Assembly, Refrigerators, Washing Machine, Body Shop of Cars, Fabrication Shops, Chassis Assembly of Cars, Tractors, Jeeps, etc.
2. To suspend welder guns.
3. To suspend spray guns, shot blasting guns.
4. To suspend drifting attachments in mines and quarries, jute & synthetic bag closing machines.
5. To suspend gauges, jigs & fixtures, pendant station, switch button of hoists.
6. In case of de-oxidation, water washing of plating work with raising and lowering of work, etc.

PART NO.	BALANCING CAPACITY		ROPE TRAVEL (MTRS)	ROPE DIA (MM)	UNIT WEIGHT (KGS)	GENERAL TOOLS USED	NORMAL AREA OF USE
	MIN (KGS)	MAX (KGS)					
TUSB-1.5	0.25	1.5	1	3	1.2	PNEUMATIC	ENGINE, TWO WHEELERS
TUSB-12	1	2	1	3	1.2	SCREW DRIVERS	TV AND VCR
TUSB-13	1	3	1.3	3.5	2.3	RIVETTERS, IMPACT	REFRIGERATOR
TUSB-2.55	2.5	5	1.3	3.5	2.5	WRENCHES	WASHING MACHINES ASSEMBLIES
TUSB-4.59	4.5	9	1.5	4	4.2	IMPACT WRENCHES	BODY SHOP AND
TUSB-915	9	15	1.5	4	4.5	SMALL PORTABLE	CHASSIS ASSEMBLY OF
TUSB-1522	15	22	1.5	5	9	SPOT WELDERS,	CARS, TRACTORS AND
TUSB-2230	22	30	1.5	5	9.5	RIVETTERS	JEEPS & FABRICATION SHOPS
TUSB-3040	30	40	1.5	5	10.5	HYDRAULIC TOOLS	BODY SHOP (WELD)
TUSB-4050	40	50	1.5	5	11.2	& RIVETTERS, NUT	CHASSIS ASSEMBLY
TUSB-5060	50	60	1.5	5	12.6	RUNNERS, PORTABLE	
TUSB-6070	60	70	1.5	5	13.2	SPOT WELDERS	
TUSB-7085	70	85	1.5	8	25		
TUSB-85100	85	100	1.5	8	27.5	MULTISPINDLE NUT	ASSEMBLY OF TRUCKS,
TUSB-100120	100	120	1.5	8	30.5	RUNNERS, PNEUMATIC RIVETTERS, ETC.	VAN, JEEPS, CHASSIS ASSEMBLY SHOP, BODY (WELD) SHOPS

• TULEX ADJUSTABLE CLICK TYPE TORQUE WRENCHES :



Tulex Torque Wrench is a calibrated tool recommended for use in controlled tightening of nuts & bolts to avoid over/under stressing. Tulex Torque Wrenches are preset / adjustable click type torque wrenches which are available in ratchet and non-ratchet types. Tulex torque wrenches are compact, lightweight and rigid to suit the heavy duty working conditions existing in Indian Industry particularly the automobile sector and other critical industries.

Tulex Torque Wrench is a fast acting precision spanner cum instrument of an entirely new design for tightening of bolts and nuts to the required Torque. The Torque Wrenches are available in a set of 12 models covering Torque requirements from 2.5 to 2700 Nm. Tulex Torque Wrenches are calibrated to an accuracy $\pm 5\%$ on calibrators and our equipment's are traceable to National Physical Laboratories, an important prerequisite for ISO 9000. Each and every Torque Wrench is accompanied with its Calibration Certificate. These are also traceable to National Standards and we guarantee our Torque Wrenches against any premature failure. Tulex Torque Wrenches are also available in special production models to suit exact Torque requirement and critical applications that do not have direct access.

Industries where Tulex Torque Wrenches are used :

Automobile, Heavy Engineering, Power Plants, Petrochemicals, Fertilizers, Aeronautics, Defence Organisations, etc. etc.

MODEL NO.		TORQUE RANGE		SQUARE DRIVE		OAL
NON-RATCHETING TYPE	RATCHET TYPE	(IN NM)	(IN LB-FT)	(IN KGM)	(IN INCHES)	(IN MM)
TUT-8B	TUT-8BR	2.5-11	2-8	0.3-1.1	3/8"	317
TUT-24B	TUT-24BR	5-33	4-24	0.5-3.4	3/8"	422
TUT-50C	TUT-50CR	12-68	10-50	1.2-7	1/2"	476
TUT-100C	TUT-100CR	25-135	20-100	3-14	1/2"	546
TUT-160C	TUT-160CR	50-225	40-160	5-23	1/2"	597
TUT-250C	TUT-250CR	70-330	50-250	7-35	1/2"	825
TUT-410D	TUT-410DR	140-560	100-410	14-57	3/4"	1130
TUT-500D	TUT-500DR	135-750	100-500	14-75	3/4"	1080
TUT-700D	TUT-700DR	480-940	350-700	49-95	1"	1397
TUT-1000E	TUT-1000ER	700-1400	500-1000	71-140	1"	1505
TUT-1400E	TUT-1400ER	1000-1900	750-1400	105-195	1"	1260
TUT-2000E	TUT-2000ER	1350-2700	1000-2000	135-275	1"	1470



We also manufacture interchangeable Head Type Torque Wrenches. Interchangeable Heads available are of (1) Open End & (2) Bihex Ring Types. Sizes are available on request.

• TULEX HAND TORQUE MULTIPLIERS :



TULEX TORQUE MULTIPLIER is a heavy duty tool used to increase the Torque produced by Torque Wrenches. They have been developed and designed to meet high torque requirements keeping in view space restrictions in Torque Wrench applications. Torque multipliers are suggested for either tightening of high tensile bolts or loosening rusty and frozen nuts bolts.

Tulex Torque Multipliers are machined to high precision. The Gear units are designed for multiplication of input torque. Multipliers are recommended to be used where very high torque (over 100 kg mtr.) are required to minimise input effort. The use of Torque Multipliers reduces the manpower required as well as operator fatigue. The Multiplier has a Gear mechanism by which the Torque applied on the input side is multiplied in a particular ratio. Tulex Multipliers are available in Multiplication Factors of 5:1 & 25:1. Torque Multiplier covers Torque requirements from 170 kg mtr to 965 kg. mtr. (1250 lb.ft to 7000 lb.ft.)

Applications :

Tulex Torque Wrenches are recommended to be used at the Input end to achieve an exactly calculated output Torque so the fluctuation of efficiency remains extremely small over a long period. It is extensively used in large Petrochemicals and Refineries.

Specifications :

HAND TORQUE MODEL NO.	MAX. OUTPUT TORQUE			BOLT CAPACITY		MULTIPLICATION FACTOR	FEMALE INPUT SQ. IN	MALE INPUT SQ. IN	MAJOR DIA MM	DEPTH MM	RECOMMENDED TORQUE WRENCH NO.	WT. WITH REACTION PLATE KG.
	LB FT.	NM	KG.M	IN.	MM.							
TUTM-1	1250	1700	170	1.1/8	28	5	1/2	3/4	115	85	TUT-250C	4.5
TUTM-2	1250	1700	170	1.1/8	28	5	3/4	1	115	93	TUT-250C	5.0
TUTM-2/25	1250	1700	170	1.1/8	28	25	1/2	1	115	120	TUT-50C	7.0
TUTM-5	2000	2700	275	1.3/8	35	5	3/4	1	136	100	TUT-500D	8.0
TUTM-5/25	2000	2700	275	1.3/8	35	25	1/2	1	136	130	TUT-100C	11.0
TUTM-6	2500	3400	345	1.1/2	38	5	3/4	1.1/2	136	105	TUT-750D	8.5
TUTM-6/25	2500	3400	345	1.1/2	38	25	1/2	1.1/2	136	130	TUT-100C	11.5
TUTM-7	4500	6000	622	2.1/2	62	5	3/4	1.1/2	168	125	TUT-1000E	15.5
TUTM-7.25	4500	6000	622	2.1/2	62	25	1/2	1.1/2	168	180	TUT-250C	19.5
TUTM-9/25	7000	9500	965	3	75	25	3/4	1.1/2	220	170	TUT-500D	27.0

• TULEX HEAVY DUTY INDUSTRIAL SERVICE TOOL KITS & SOCKET SETS :



Tulex Tool Kits / Socket Sets are known for their best quality and durability. The Tool Kits and Socket Sets are manufactured under stringent quality control and each Tool Kit can match the best of its kind from anywhere in the world. Each tool in the Tool Kit / Socket Set are manufactured keeping the safety factor in mind. The Tool Kits not only enables the operator to perform any types of repair and maintenance jobs, but helps to complete the job quickly.



Tulex Tool Kits and Socket Sets can be supplied as per customer specifications and needs and for their OEM requirements.

Tulex Socket Sets and accessories has come into our product range due to market requirements. Each Socket Set is provided in a metallic Tool Box and the metal Tool Box is fabricated after stringent quality control to match the best of its kind from anywhere in the world. The Tool Box is painted with special rust resistant paint. The Technician can feel proud for being in possession of these Tulex Tool Kits and Socket Sets.

The Socket Sets are available in various square drive sizes ranging from 1/4" to 2 1/2".

Note : We have Toolkits available for automobile service / garage & maintenance purposes. Toolkit content list is available on request.



• TULEX SPECIAL TOOLS AS PER CLIENTS SPECIFICATIONS & DRAWINGS :

Besides a complete range of Tulex Heavy duty Industrial Tools, we can also cater for special tools to suit critical applications as per drawings / specifications provided by the customer. Tulex may have what you need as a non catalogue item or our experienced staff of tooling experts can design and produce application specific special tools to suit your exact needs and requirements. Tulex begins its quality with the selection of best raw materials and each tool manufactured by Tulex is machined under close tolerance standards. You will always get an exact, sure fit, a fit not possible from tools made in a process that grows less precise with every stamp. Each tool goes through perfect heat treatment and tempering process that lets you select the highest degree of hardness you desire. We can also manufacture special sockets as per client's drawing and specifications. A few special tools manufactured by us are illustrated below.



• TULEX TURBINE MAINTENANCE TOOLS :

We also manufacture Turbine Tools like Castellated Sockets & Sledging Wrenches / Stack Sockets, Spline Sockets etc. Sizes & Details on Request.



TULEX INDUSTRIAL TOOLS (P) LTD.

Manufacturers of Industrial Hand Tools & Accessories

SALES OFFICE : CITIMALL, 106-B, 1st Floor, Near

Penderkar College, M.I.D.C., Dombivli (East) -

421201. District: Thane, Maharashtra, India

Telefax: 91-251-2436207 & 91-251-2436208

E-mail: tulex.sales@gmail.com

Website: www.tulextools.com

YOU SPECIFY, WE SATISFY